

18. Build the Exoskeleton: Doors

T teslarcs.com/assembly-manuals/cybertruck/14-19-build-the-exoskeleton/18-build-the-exoskeleton-doors/



Difficulty

Moderate



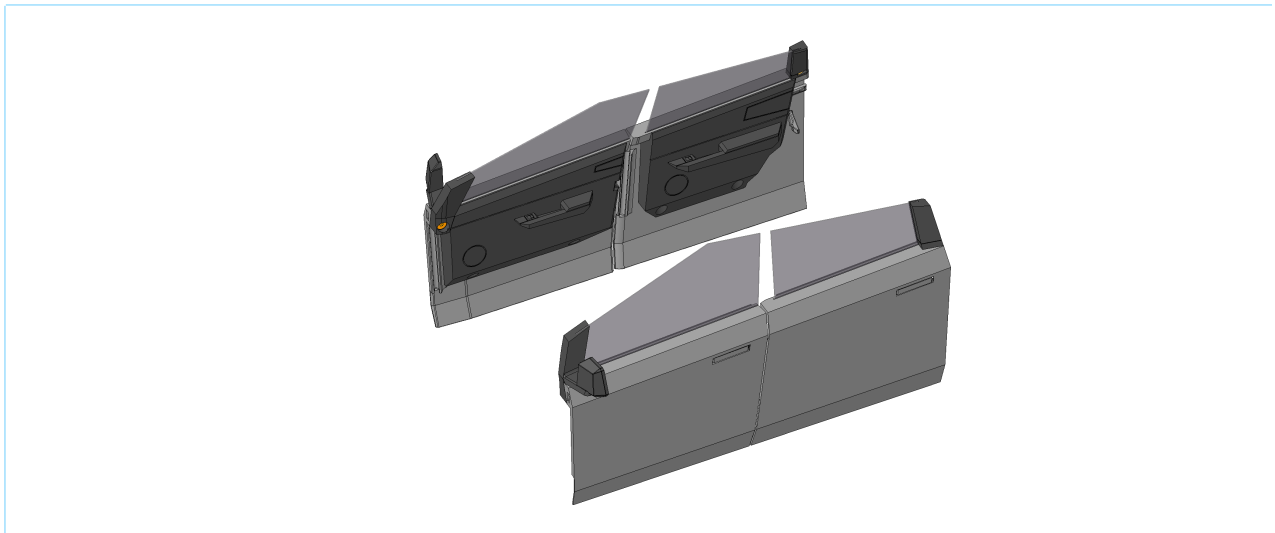
Steps

15



Get entire manual as PDF

Downloading soon



In this Chapter we will assembly the parts, which were printed in the **“8. 3D Print the Exoskeleton parts: Doors”**!

Step 1: Left Front Door: Mirror

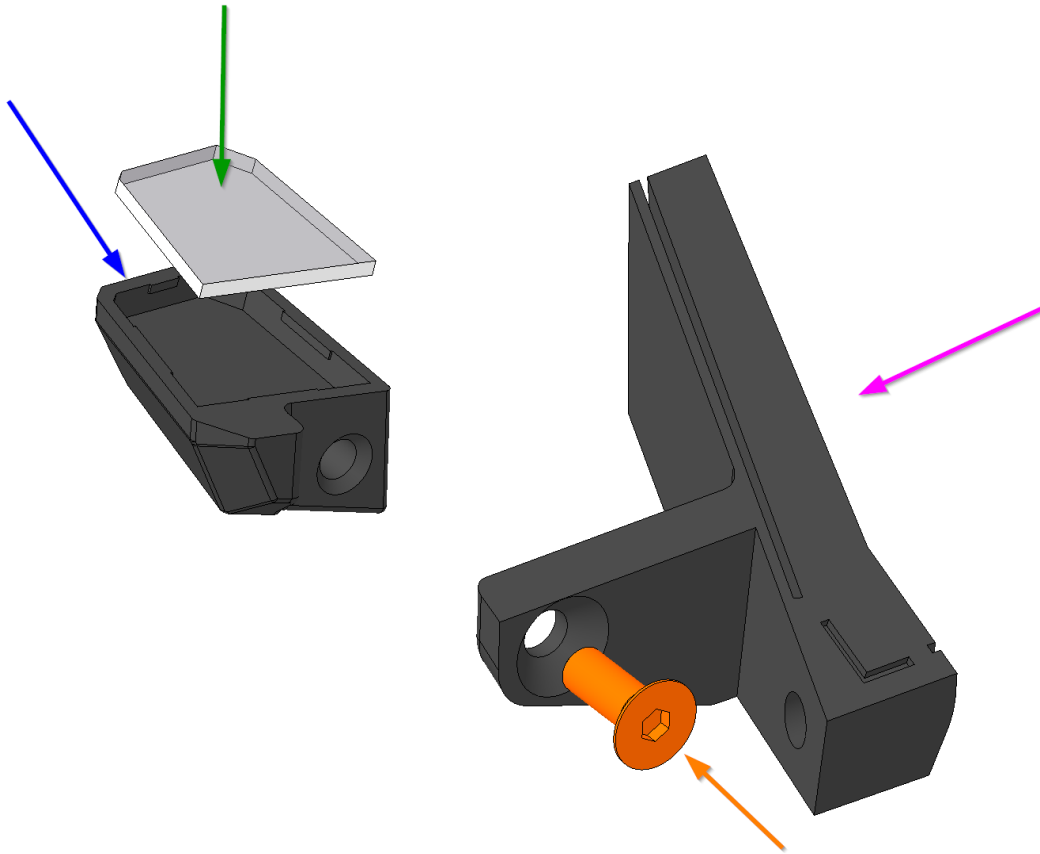
For the following step, please prepare:

- EX_A2_PILLAR_SUPPORT_L (1x)
- EX_SIDE_MIRROR_GLASS_L (1x)
- EX_SIDE_MIRROR_L (1x)
- M3x8 (1x)

Sub-Steps:

- Snap in the “EX_SIDE_MIRROR_GLASS_L” into the “EX_SIDE_MIRROR_L” (●) with hand
- Tighten the M3x8 screw

The screws are go in printed plastic, so **don't use excessive strength during tightening**, or the thread in the printed part will damage.





Step 2: Left Front Door: Panel

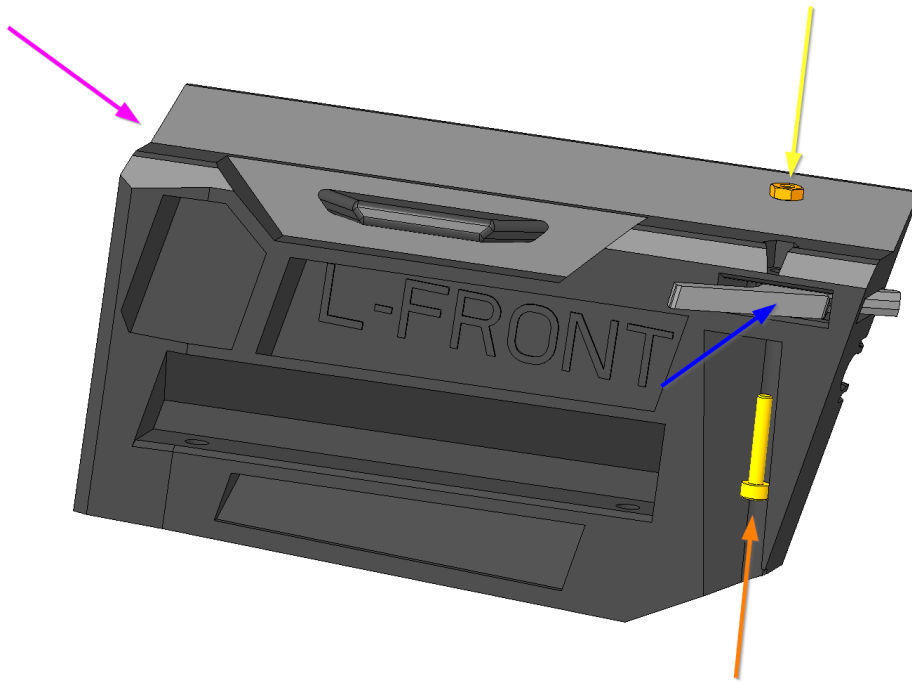
For the following step, please prepare:

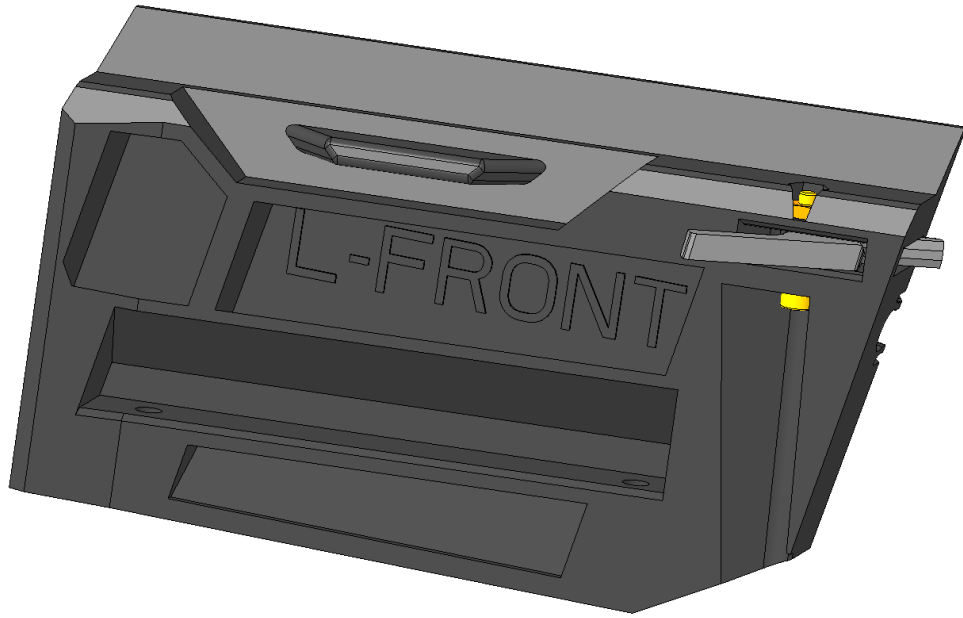
- EX_FRONT_DOOR_PANEL_L (1x)
- EX_DOOR_HANDLE_L (1x)
- M2 Hexagon nut (1x)
- M2x12 screw (1x)
- EX_FRONT_DOOR_WINDOW_L (1x)

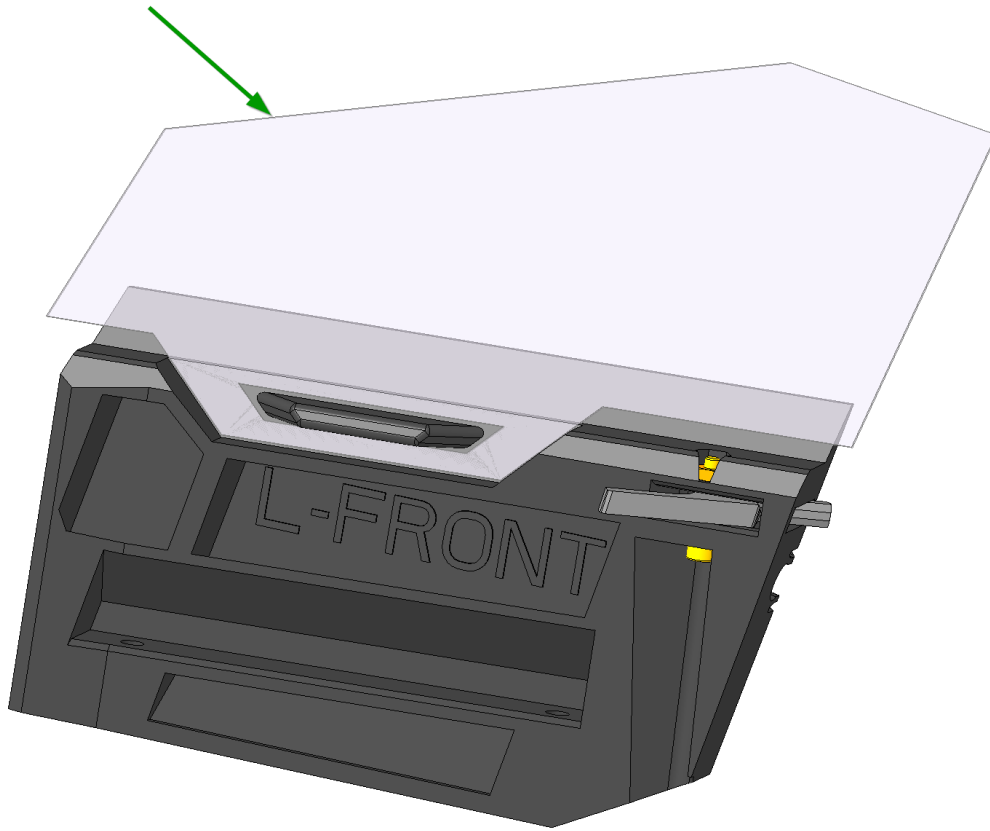
Sub-Steps:

- Put the “EX_DOOR_HANDLE_L ” into the “EX_FRONT_DOOR_PANEL_L” (●)
 - Put the M2 Hexagon nut into the “EX_FRONT_DOOR_PANEL_L” (●)
 - Tighten the M2x12 screw, but not completely. Make sure, that the Door handle can move with a small resistance.
 - **Optional, but not recommended:** You can cut the Door window with our cutting template and insert here in the “EX_FRONT_DOOR_PANEL_L” (●). Make sure that the visible windows cuttings nice and accurate. Here [are the instructions](#) for the transparent foils cutting.
-

We kept the frameless door design, like in the original Cybertruck, but because our window is a 0,4 mm thick plastic it will bend and it will make harder to open the doors, so our recommendation, that you should install the doors without windows.







Step 3: Left Front Door

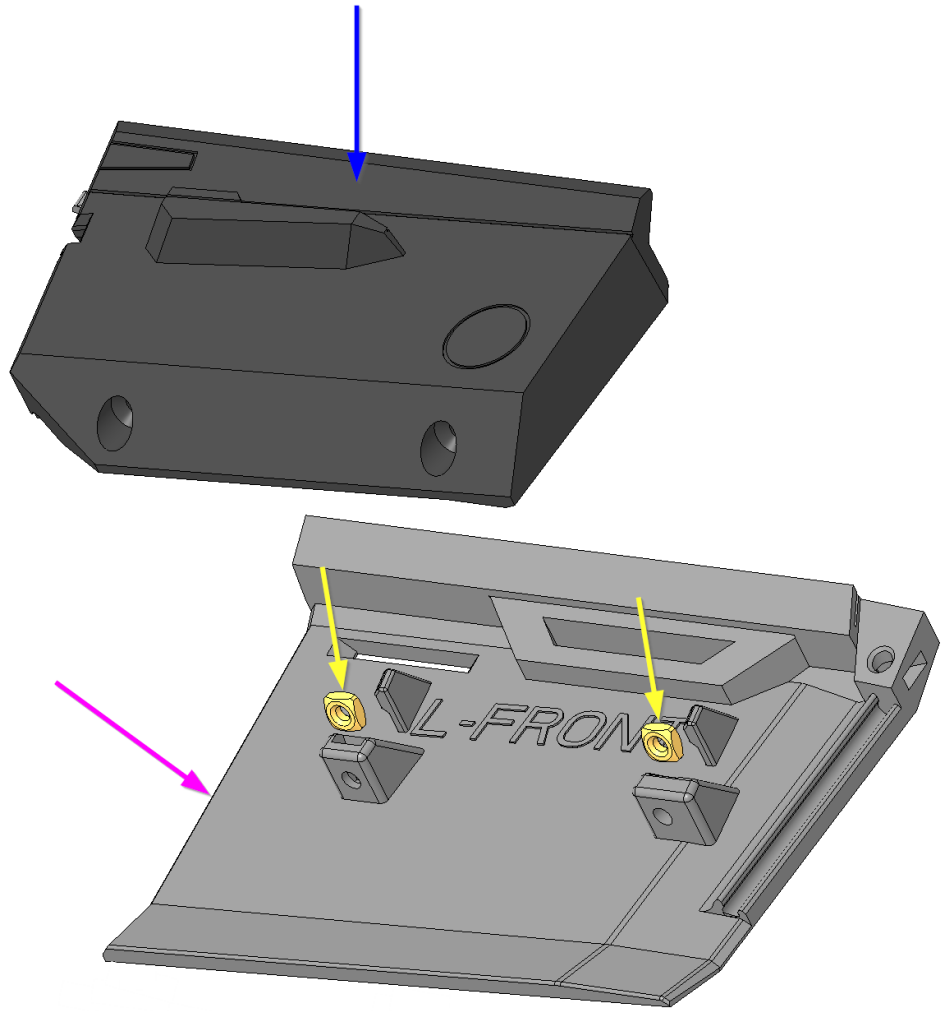
For the following step, please prepare:

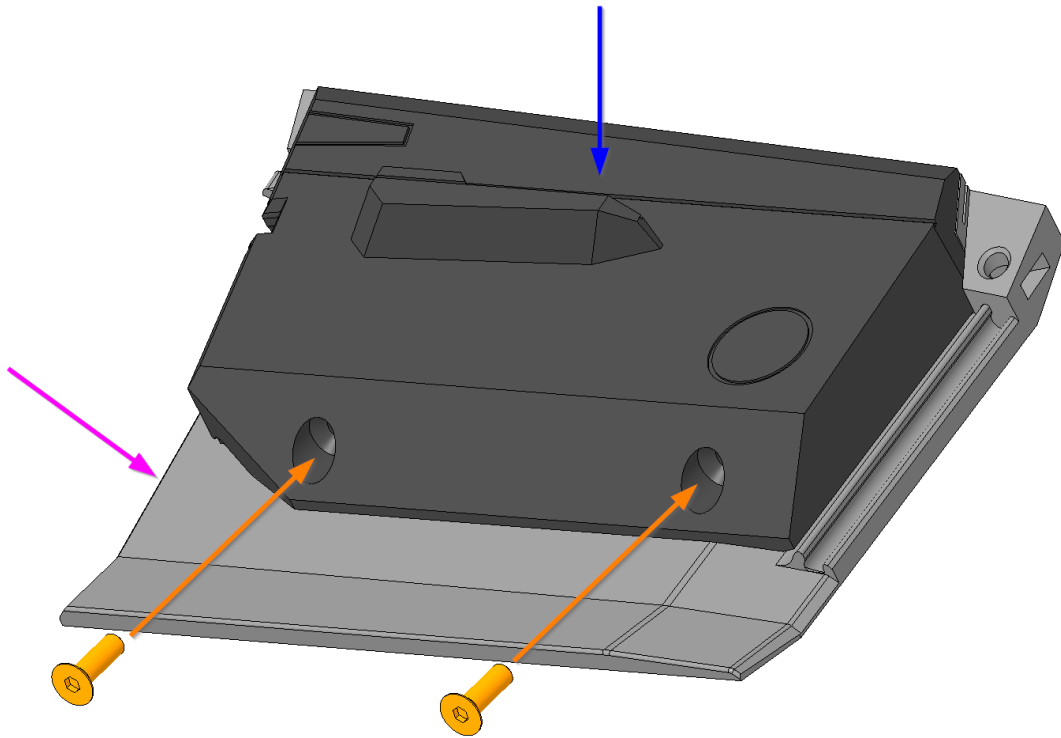
- EX_FRONT_DOOR_L (1x)
- EX_FRONT_DOOR_PANEL_L (1x)
- M3 Square nut (2x)
- M3x10 screw (2x)

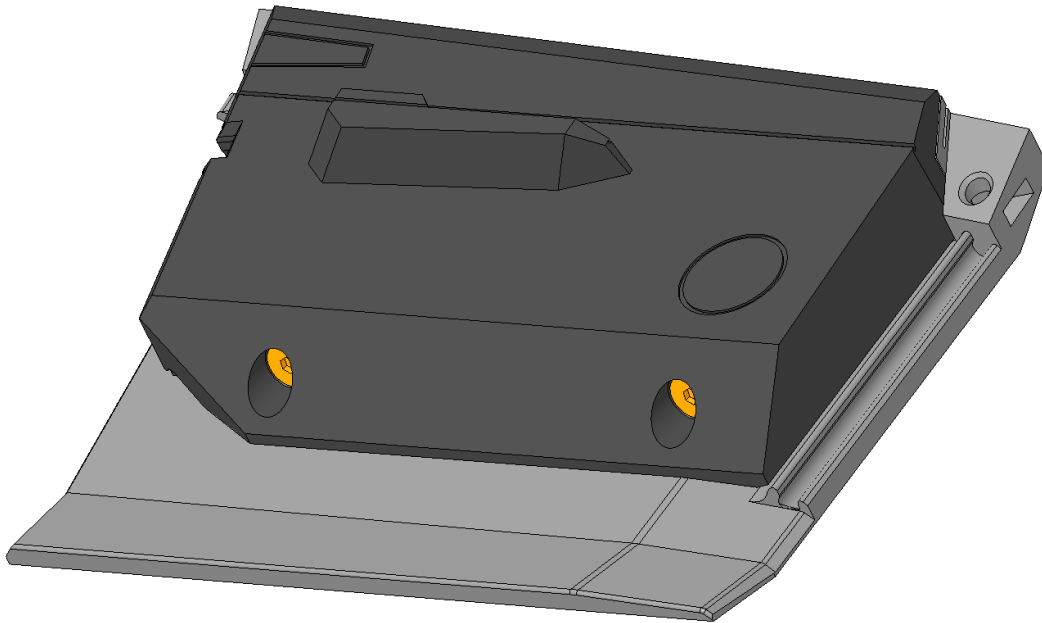
Sub-Steps:

- Put two M3 Square nuts into the “EX_FRONT_DOOR_L” (●)
- Snap in the “EX_FRONT_DOOR_PANEL_L” into the “EX_FRONT_DOOR_L” (●)
- Tighten the two M3x10 screw

Tighten carefully as you might break the printed parts.







Step 4: Left Front Door Mirror

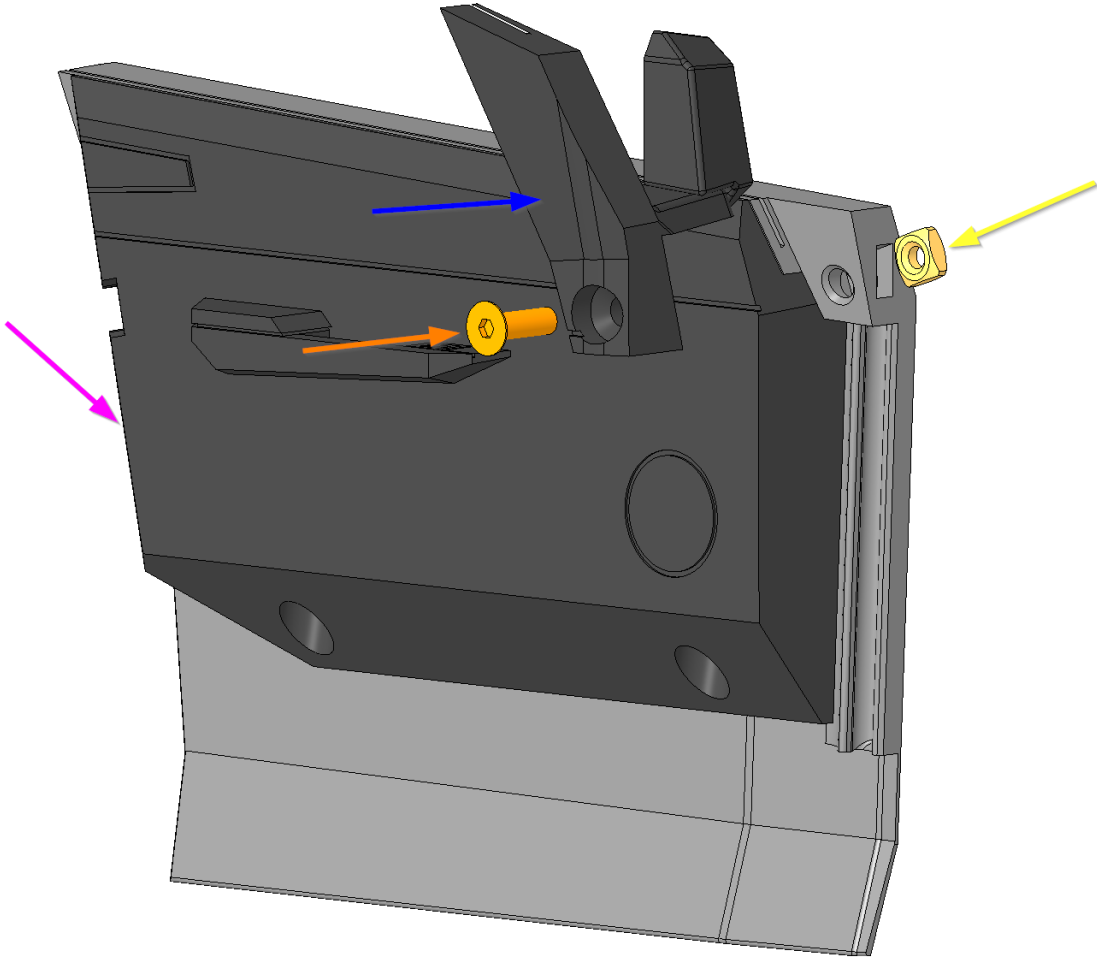
For the following step, please prepare:

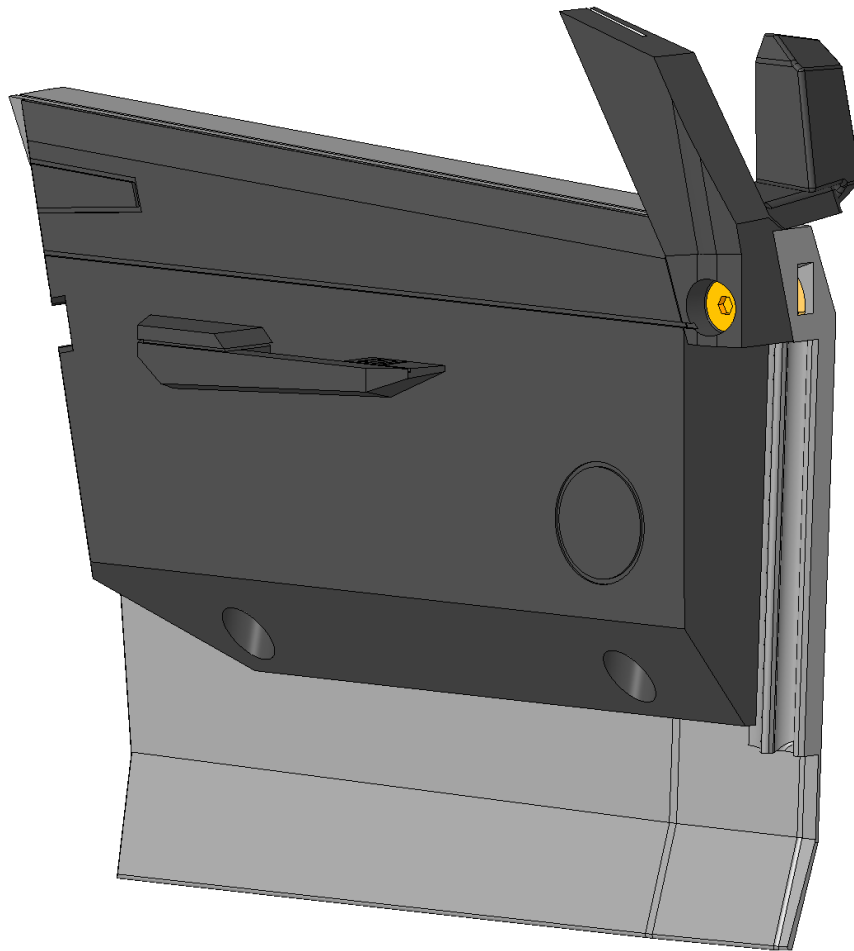
- EX_FRONT_DOOR_L (1x)
- EX_A2_PILLAR_SUPPORT_L (1x)
- M3 Square nut (1x)
- M3x10 screw (1x)

Sub-Steps:

- Put two M3 Square nuts into the “EX_FRONT_DOOR_L” (●) slot
 - Tighten with M3x10 screw the EX_A2_PILLAR_SUPPORT_L (●) to the door
-

Tighten carefully as you might break the printed parts.





Step 5: Right Front Door: Mirror

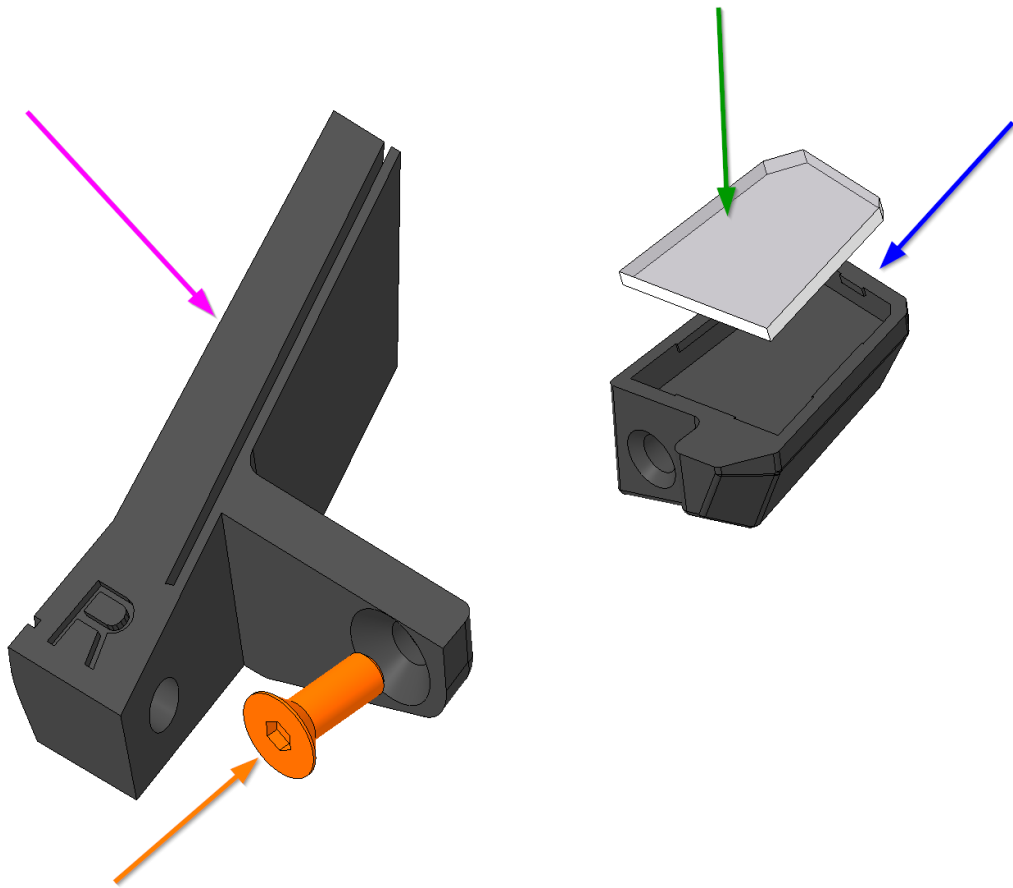
For the following step, please prepare:

- EX_A2_PILLAR_SUPPORT_R (1x)
- EX_SIDE_MIRROR_GLASS_R (1x)
- EX_SIDE_MIRROR_R (1x)
- M3x8 (1x)

Sub-Steps:

- Snap in the “EX_SIDE_MIRROR_GLASS_R” into the “EX_SIDE_MIRROR_R” (●) with hand
- Tighten the M3x8 screw

The screws are go in printed plastic, so **don't use excessive strength during tightening**, or the thread in the printed part will damage.





Step 6: Right Front Door: Panel

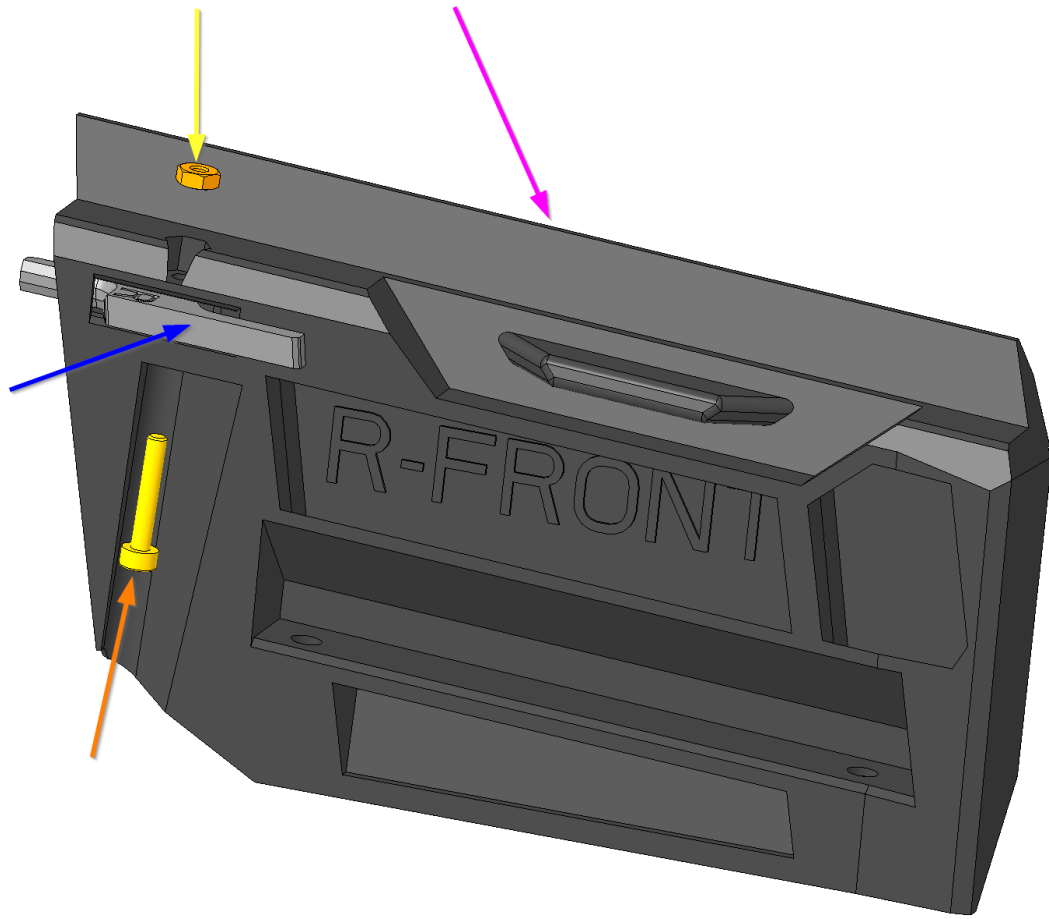
For the following step, please prepare:

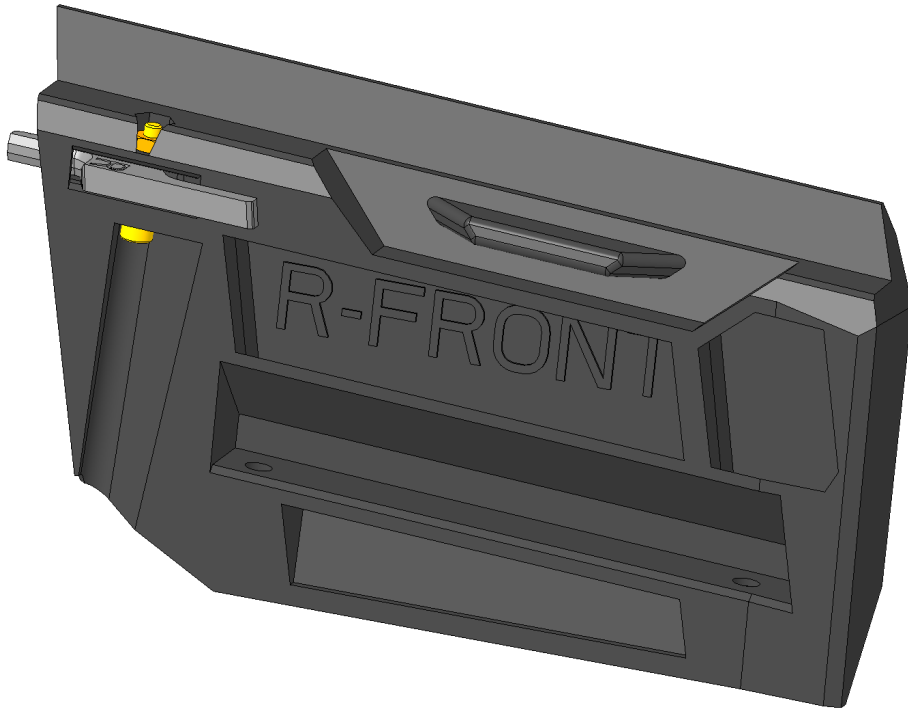
- EX_FRONT_DOOR_PANEL_R (1x)
- EX_DOOR_HANDLE_R (1x)
- M2 Hexagon nut (1x)
- M2x12 screw (1x)
- EX_FRONT_DOOR_WINDOW_R (1x)

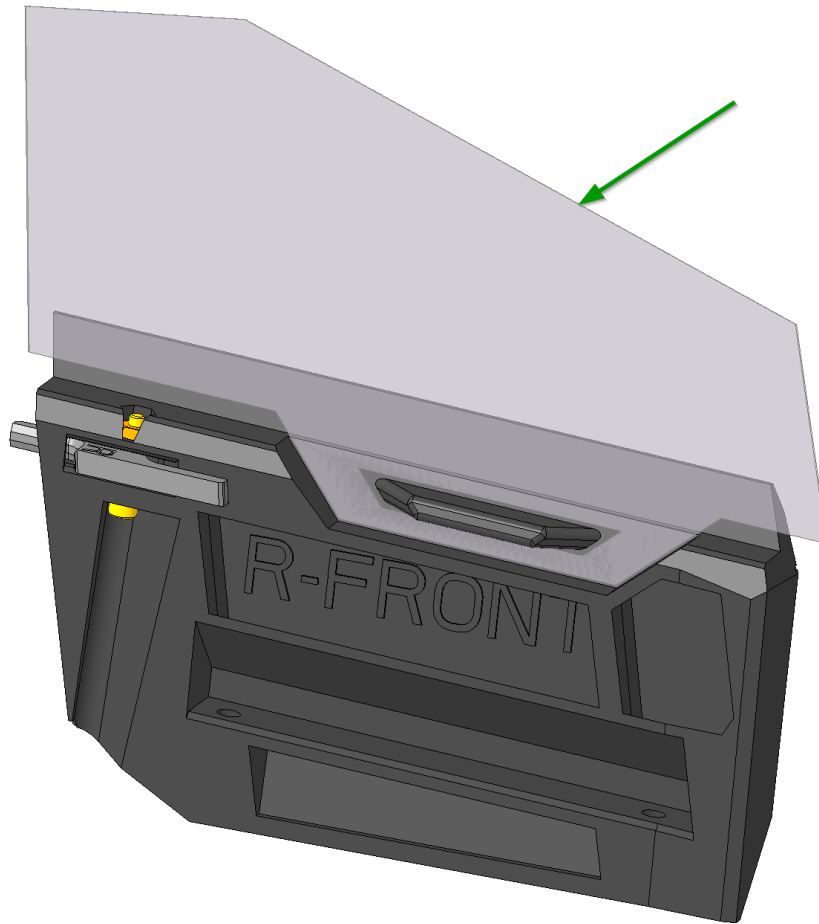
Sub-Steps:

- Put the “EX_DOOR_HANDLE_R” into the “EX_FRONT_DOOR_PANEL_R” (●)
- Put the M2 Hexagon nut into the “EX_FRONT_DOOR_PANEL_R” (●)
- Tighten the M2x12 screw, but not completely. Make sure, that the Door handle can move with a small resistance.
- **Optional, but not recommended:** You can cut the Door window with our cutting template and insert here in the “EX_FRONT_DOOR_PANEL_R” (●). Make sure that the visible windows cuttings nice and accurate. Here [are the instructions](#) for the transparent foils cutting.

We kept the framless door design, like in the original Cybertruck, but because our window is a 0,4 mm thick plastic it will bend and it will make harder to open the doors, so our recommendation, that you should install the doors without windows.







Step 7: Right Front Door

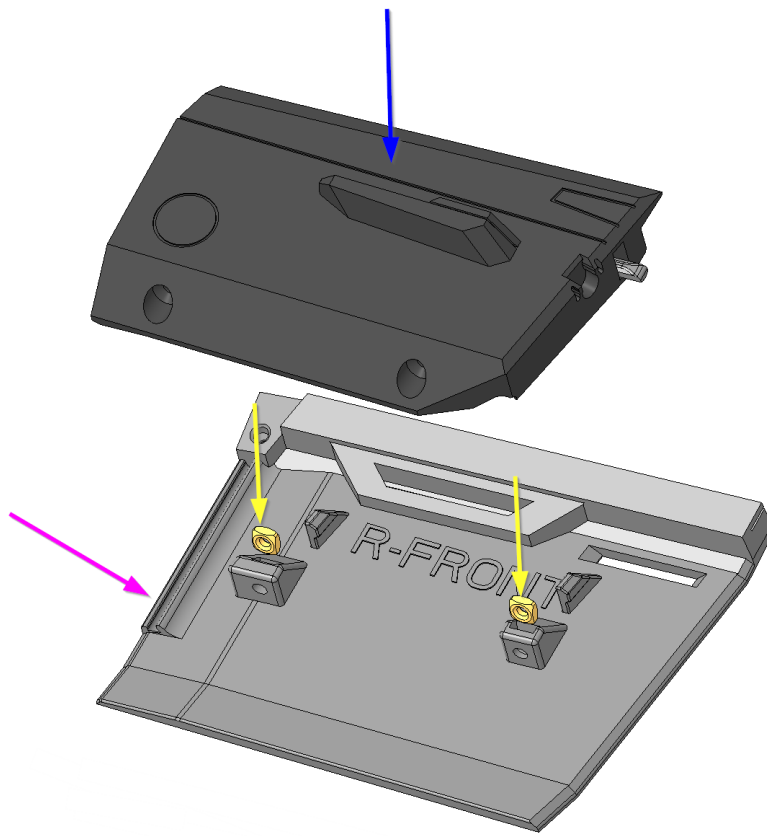
For the following step, please prepare:

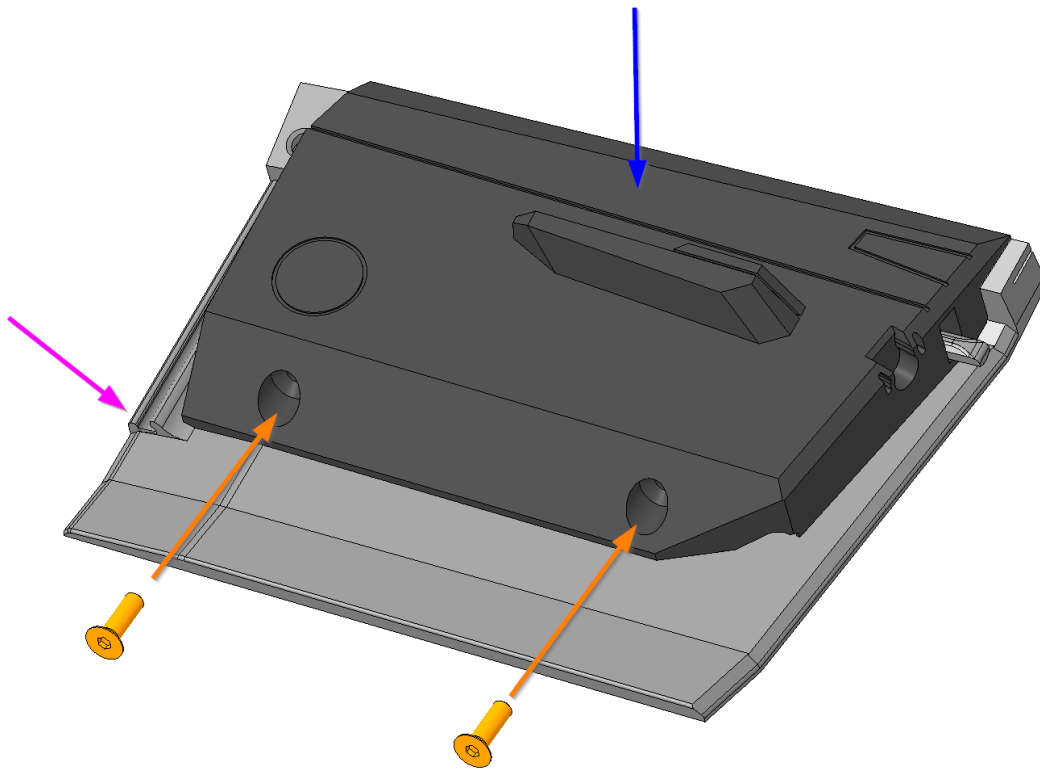
- EX_FRONT_DOOR_R (1x)
- EX_FRONT_DOOR_PANEL_R (1x)
- M3 Square nut (2x)
- M3x10 screw (2x)

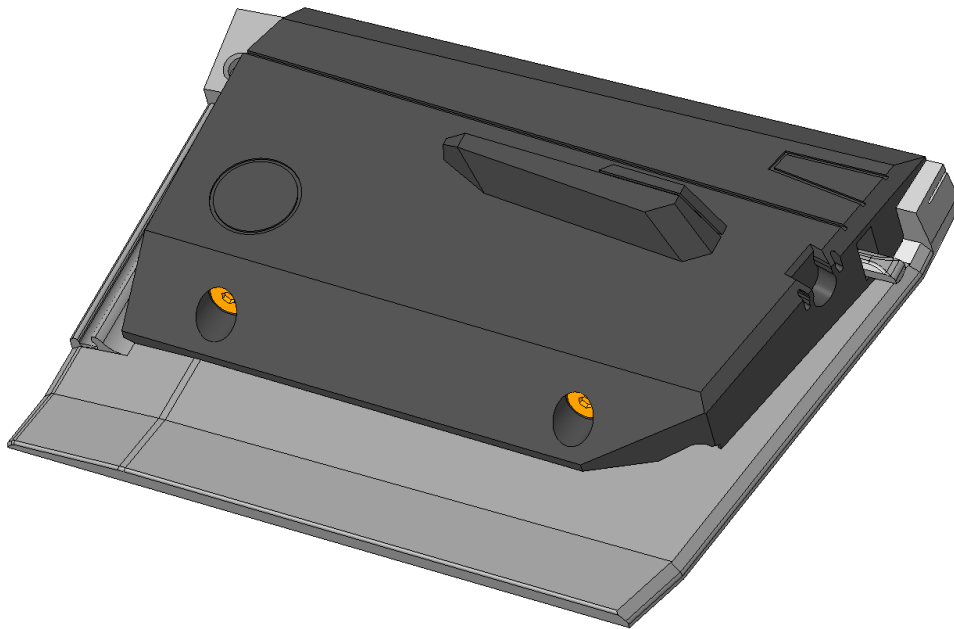
Sub-Steps:

- Put two M3 Square nuts into the “EX_FRONT_DOOR_R” (●)
- Snap in the “EX_FRONT_DOOR_PANEL_L” into the “EX_FRONT_DOOR_R” (●)
- Tighten the two M3x10 screw

Tighten carefully as you might break the printed parts.







Step 8: Right Front Door Mirror

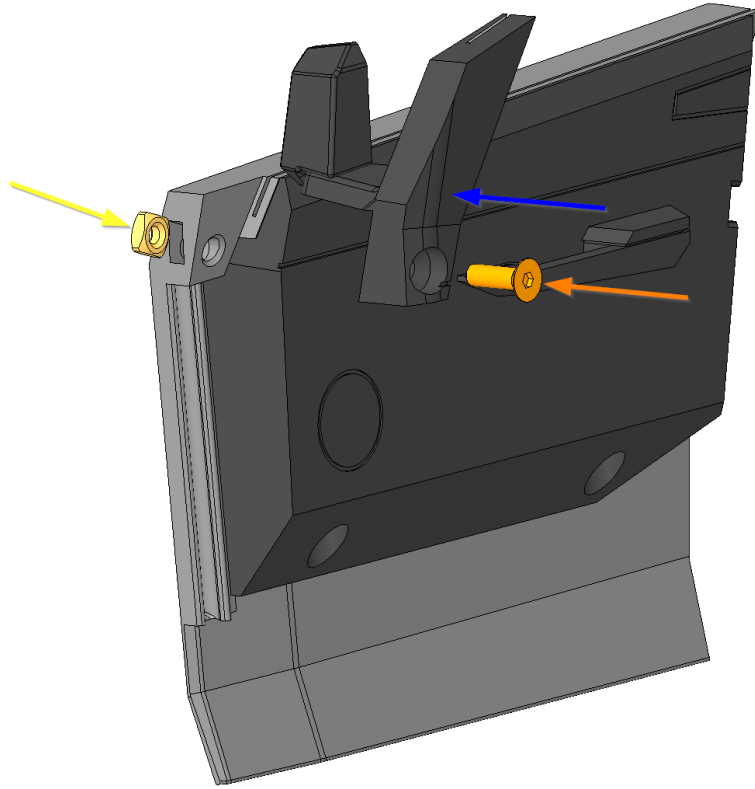
For the following step, please prepare:

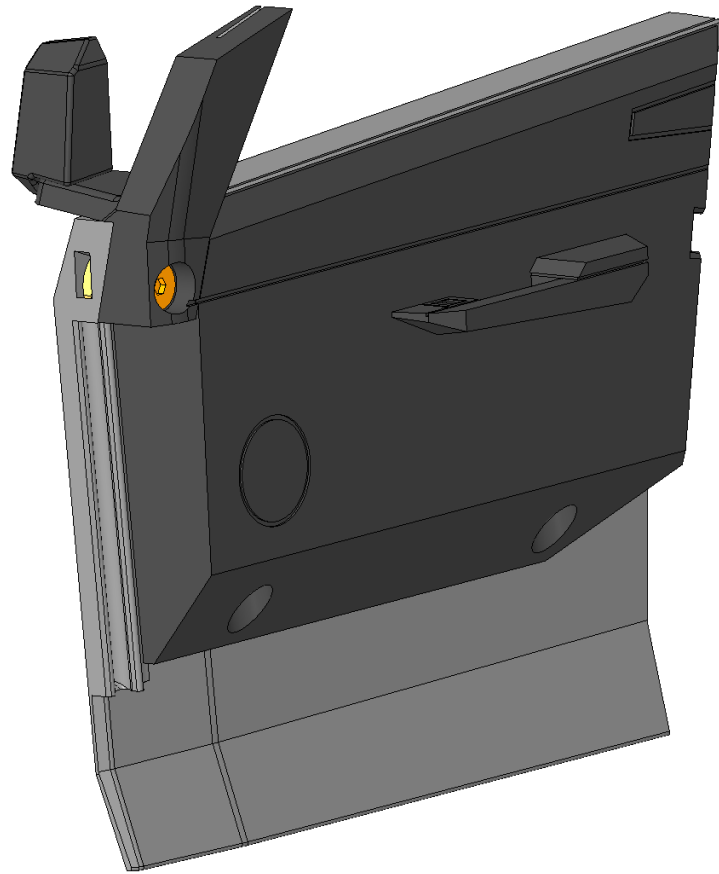
- EX_FRONT_DOOR_R (1x)
- EX_A2_PILLAR_SUPPORT_R (1x)
- M3 Square nut (1x)
- M3x10 screw (1x)

Sub-Steps:

- Put two M3 Square nuts into the “EX_FRONT_DOOR_R” (●) slot
- Tighten with M3x10 screw the EX_A2_PILLAR_SUPPORT_R (●) to the door

Tighten carefully as you might break the printed parts.





Step 9: Left Rear Door: Panel

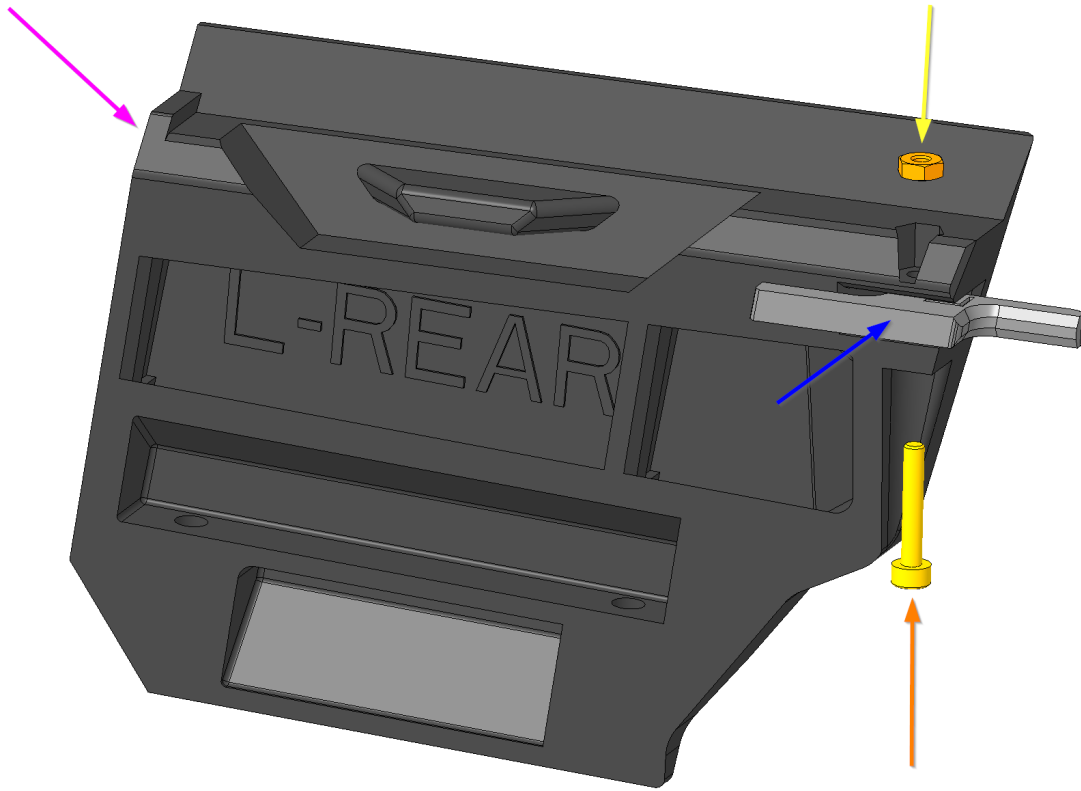
For the following step, please prepare:

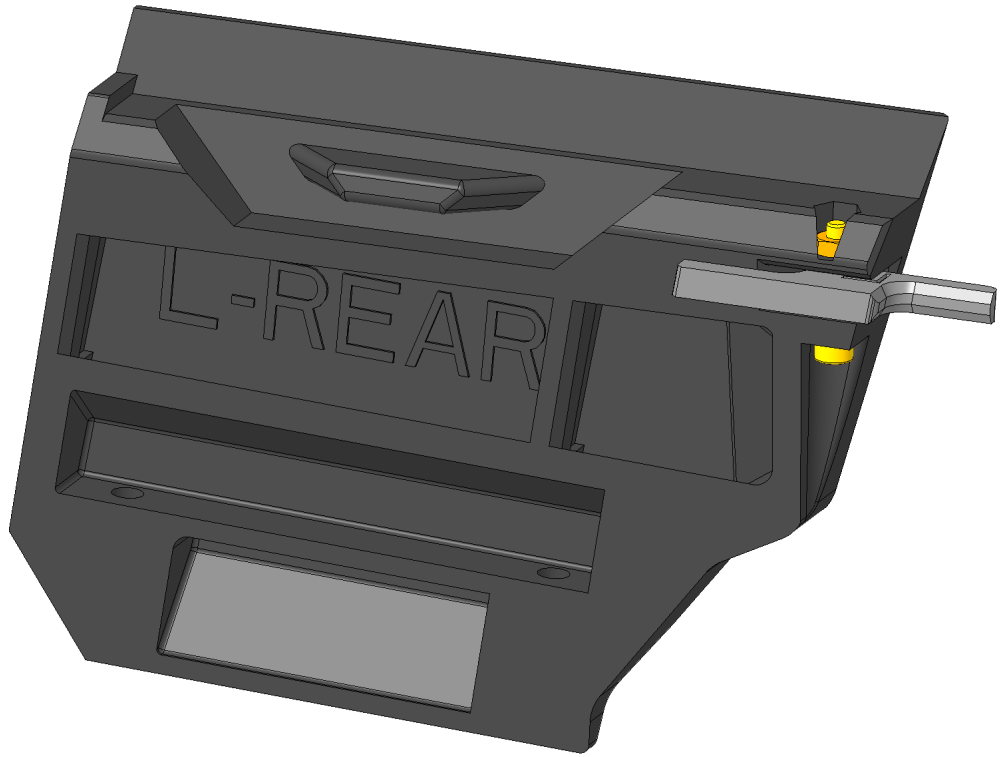
- EX_REAR_DOOR_PANEL_L (1x)
- EX_DOOR_HANDLE_L (1x)
- M2 Hexagon nut (1x)
- M2x12 screw (1x)
- EX_FRONT_DOOR_WINDOW_L (1x)

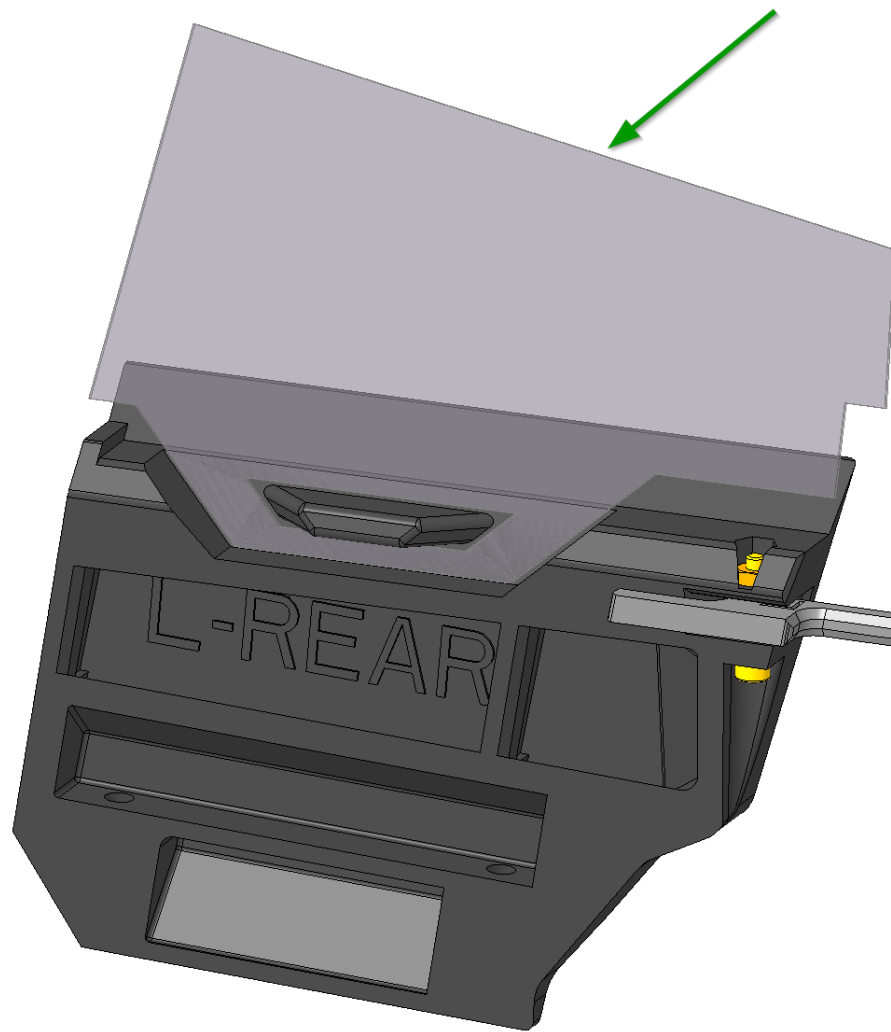
Sub-Steps:

- Put the “EX_DOOR_HANDLE_L ” into the “EX_REAR_DOOR_PANEL_L” (●)
 - Put the M2 Hexagon nut into the “EX_REAR_DOOR_PANEL_L” (●)
 - Tighten the M2x12 screw, but not completely. Make sure, that the Door handle can move with a small resistance.
 - **Optional, but not recommended:** You can cut the Door window with our cutting template and insert here in the “EX_REAR_DOOR_PANEL_L” (●). Make sure that the visible windows cuttings nice and accurate. Here are the instructions for the transparent foils cutting.
-

We kept the frameless door design, like in the original Cybertruck, but because our window is a 0,4 mm thick plastic it will bend and it will make harder to open the doors, so our recommendation, that you should install the doors without windows.







Step 10: Left Rear Door

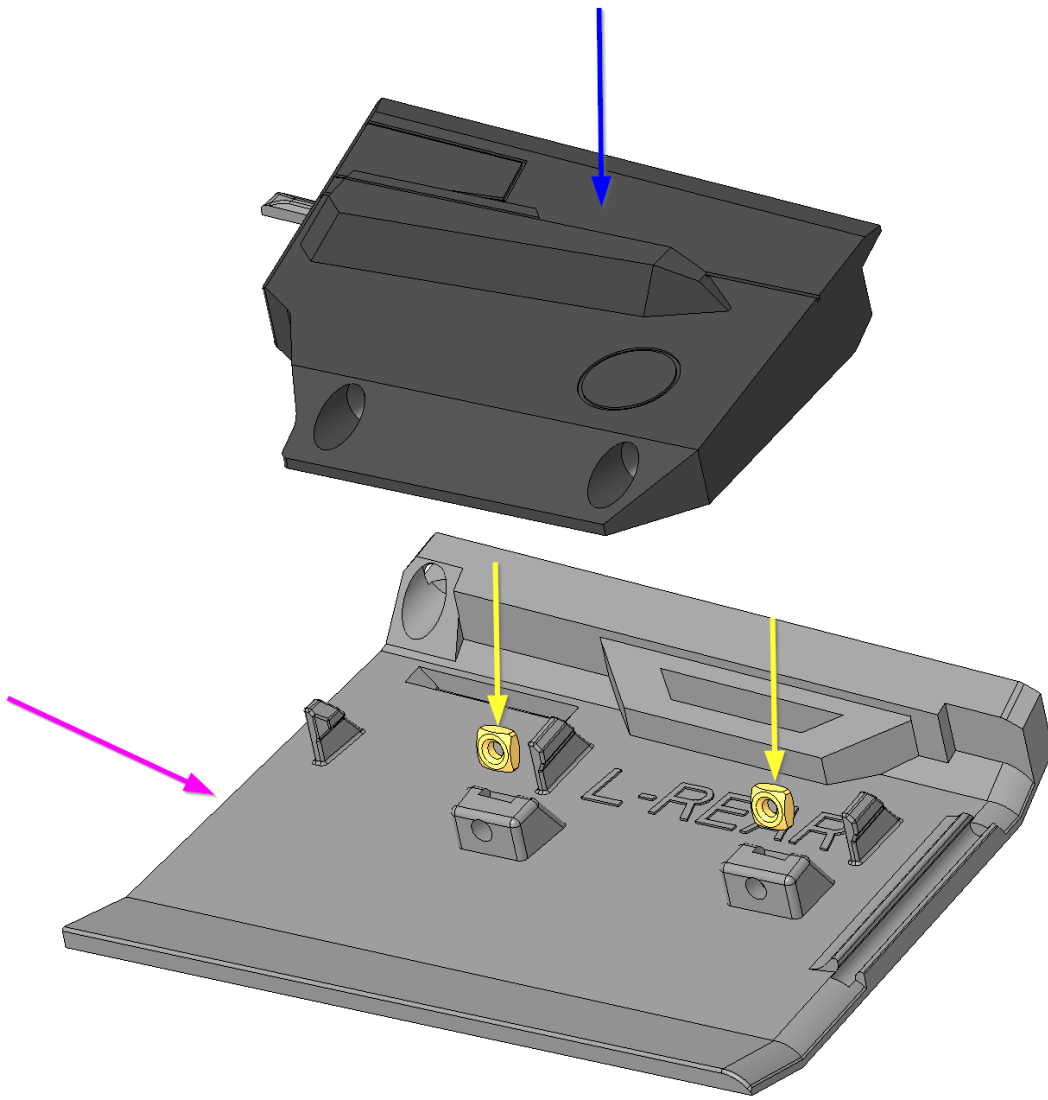
For the following step, please prepare:

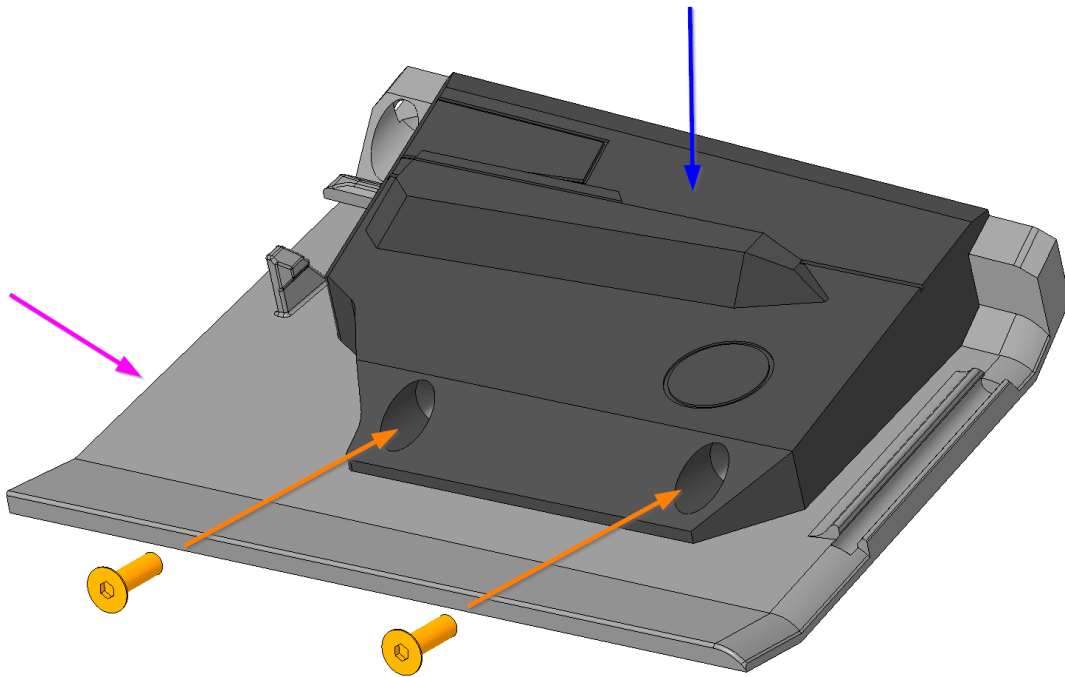
- EX_REAR_DOOR_L (1x)
- EX_REAR_DOOR_PANEL_L (1x)
- M3 Square nut (2x)
- M3x10 screw (2x)

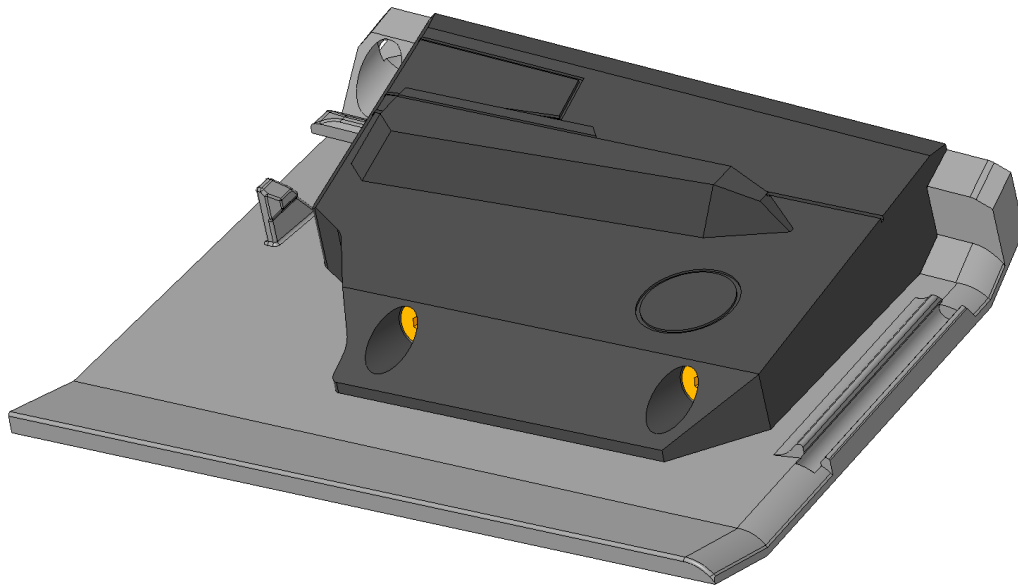
Sub-Steps:

- Put two M3 Square nuts into the “EX_REAR_DOOR_L” (●)
 - Snap in the “EX_REAR_DOOR_PANEL_L” into the “EX_REAR_DOOR_L” (●)
 - Tighten the two M3x10 screw
-

Tighten carefully as you might break the printed parts.







Step 11: Left C Pillar

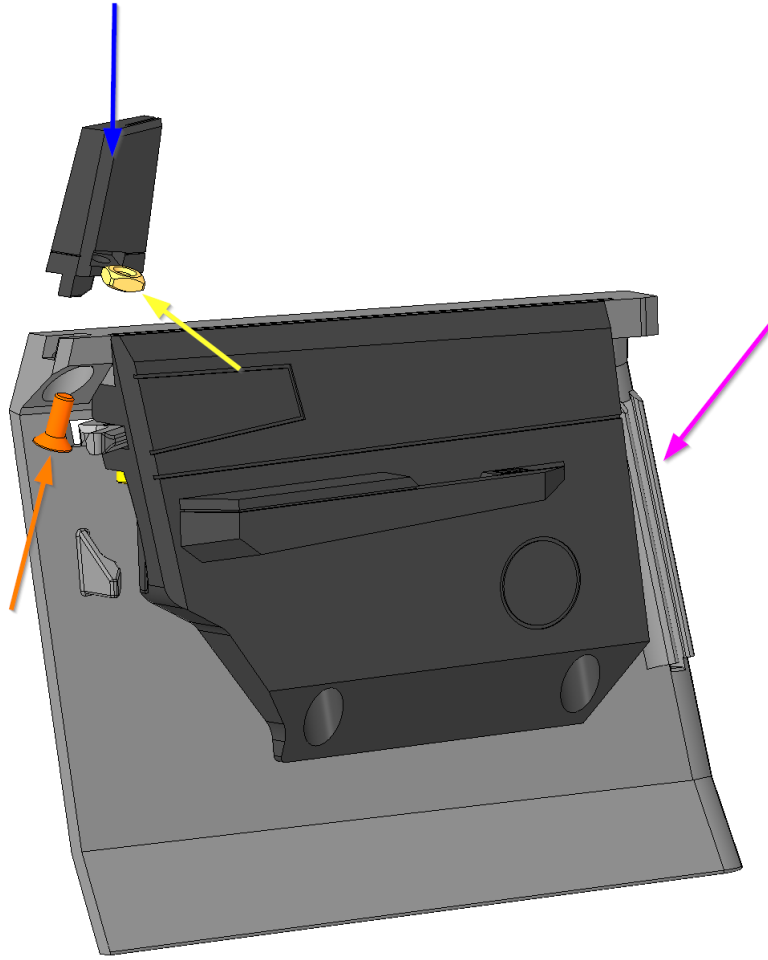
For the following step, please prepare:

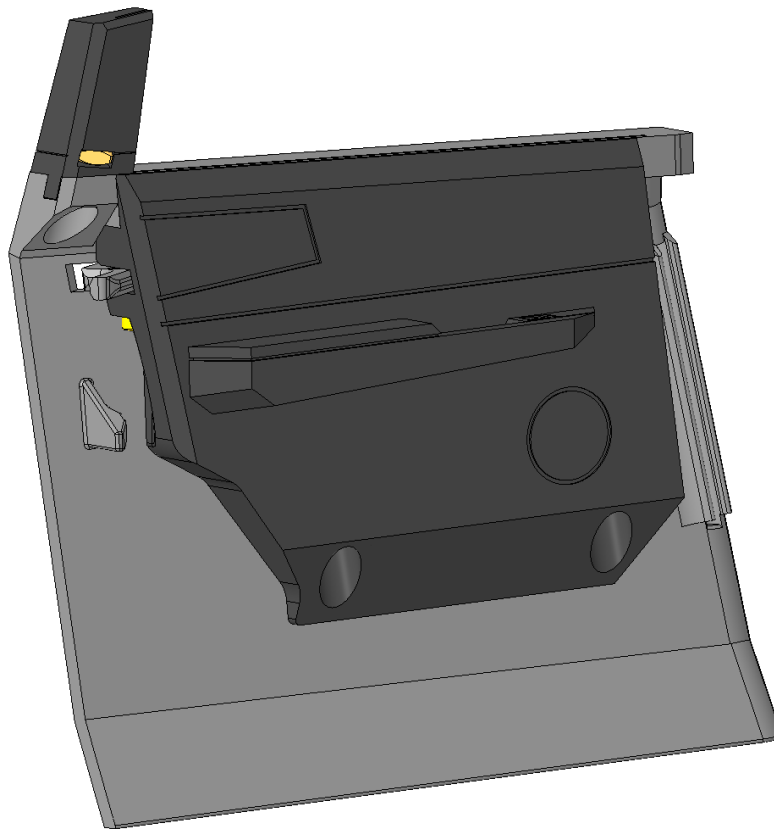
- EX_REAR_DOOR_L (1x)
- EX_C_PILLAR_SUPPORT_L (1x)
- M3 Square nut (1x)
- M3x8 screw (1x)

Sub-Steps:

- Put two M3 Square nuts into the “EX_C_PILLAR_SUPPORT_L” (●) slot
- Put the “EX_C_PILLAR_SUPPORT_L” into the “EX_REAR_DOOR_L” (●)
- Tighten the M3x10 screw

Tighten carefully as you might break the printed parts.





Step 12: Right Rear Door: Panel

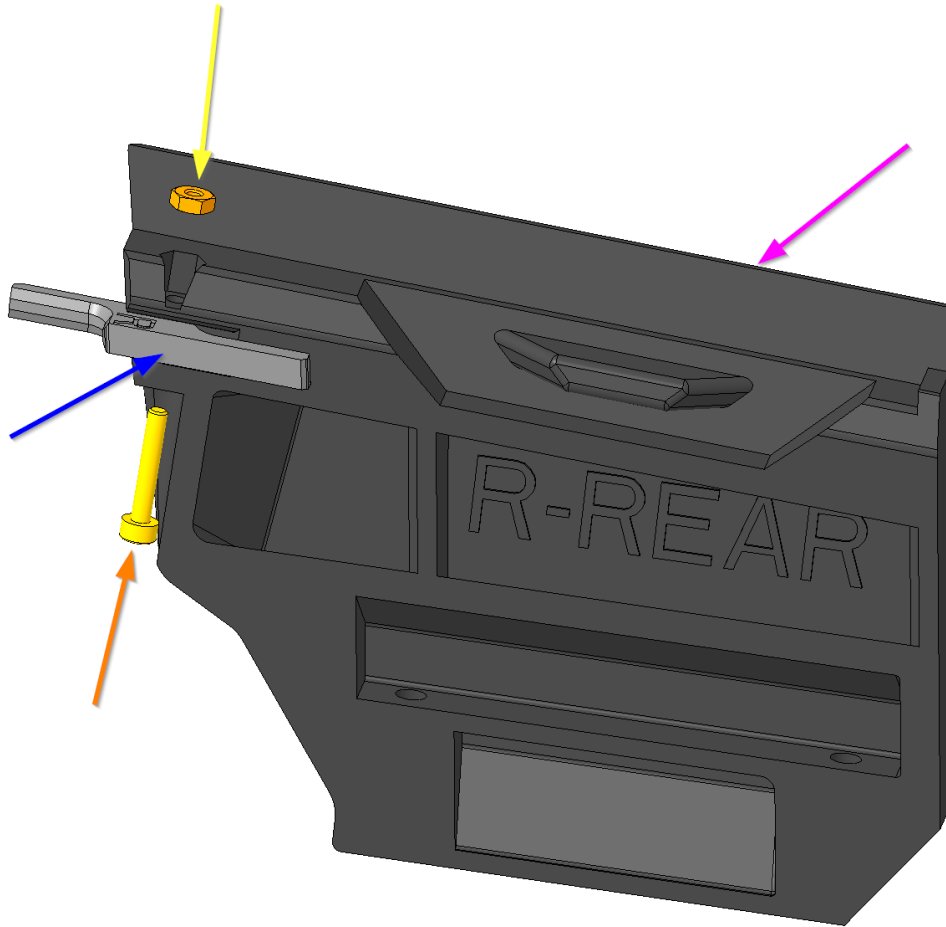
For the following step, please prepare:

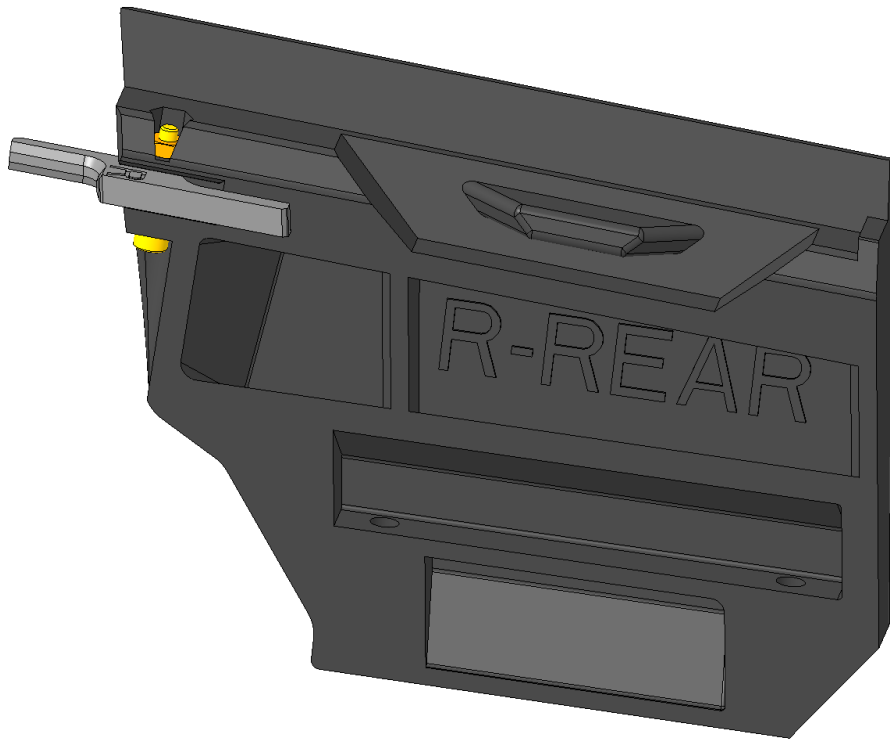
- EX_REAR_DOOR_PANEL_R (1x)
- EX_DOOR_HANDLE_R (1x)
- M2 Hexagon nut (1x)
- M2x12 screw (1x)
- EX_FRONT_DOOR_WINDOW_R (1x)

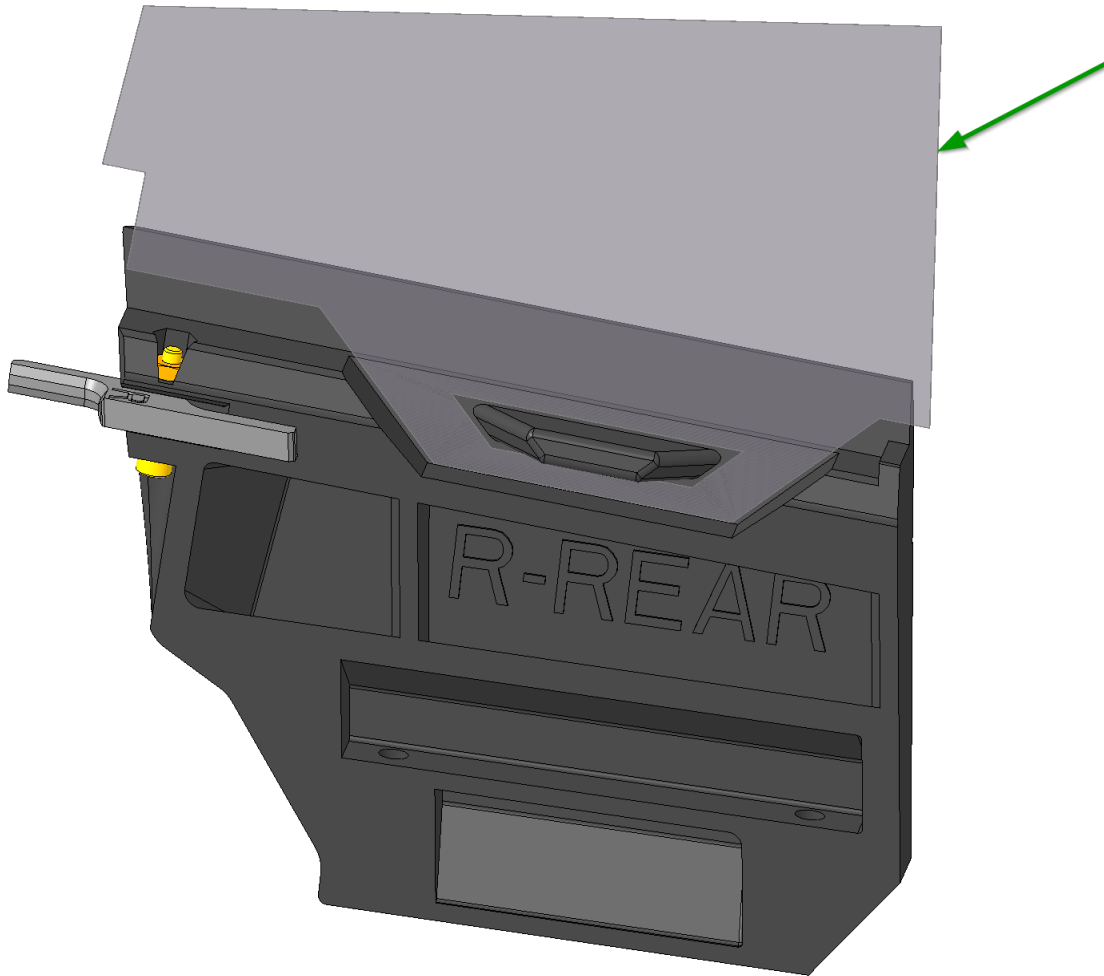
Sub-Steps:

- Put the “EX_DOOR_HANDLE_R” into the “EX_REAR_DOOR_PANEL_R” (●)
 - Put the M2 Hexagon nut into the “EX_REAR_DOOR_PANEL_R” (●)
 - Tighten the M2x12 screw, but not completely. Make sure, that the Door handle can move with a small resistance.
 - **Optional, but not recommended:** You can cut the Door window with our cutting template and insert here in the “EX_REAR_DOOR_PANEL_R” (●). Make sure that the visible windows cuttings nice and accurate. Here are the instructions for the transparent foils cutting.
-

We kept the frameless door design, like in the original Cybertruck, but because our window is a 0,4 mm thick plastic it will bend and it will make harder to open the doors, so our recommendation, that you should install the doors without windows.







Step 13: Right Rear Door

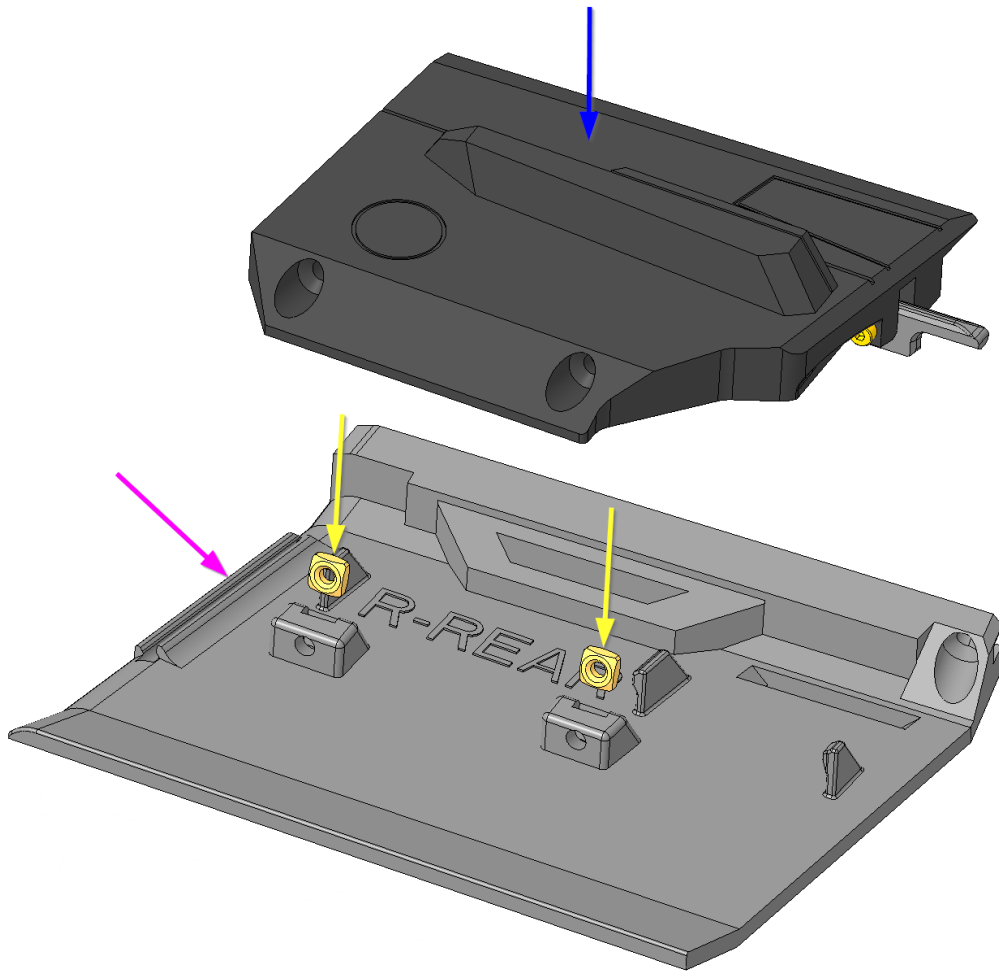
For the following step, please prepare:

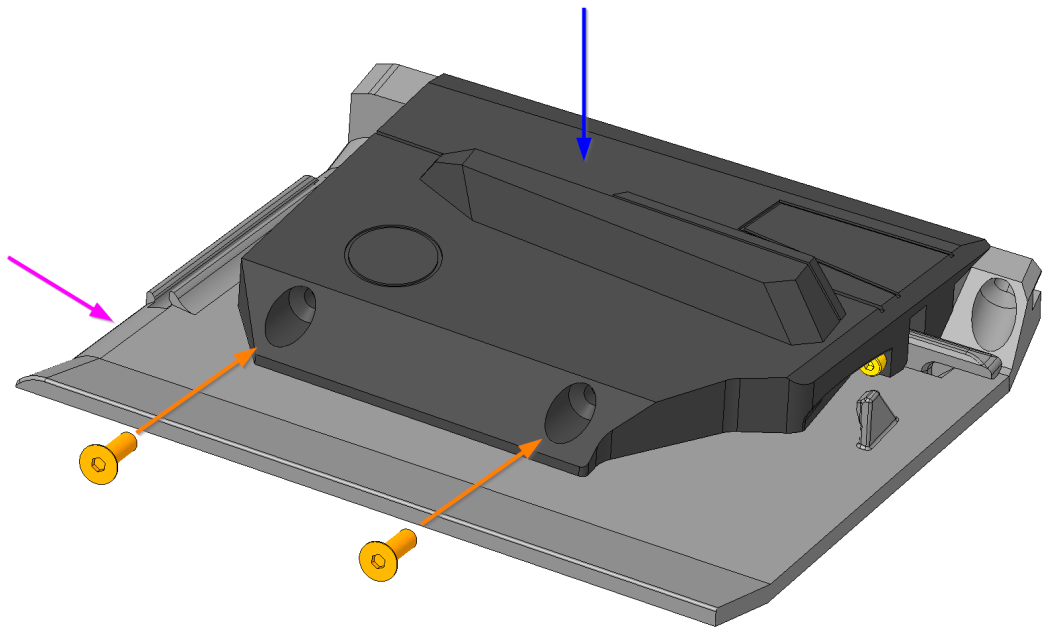
- EX_REAR_DOOR_R (1x)
- EX_REAR_DOOR_PANEL_R (1x)
- M3 Square nut (2x)
- M3x10 screw (2x)

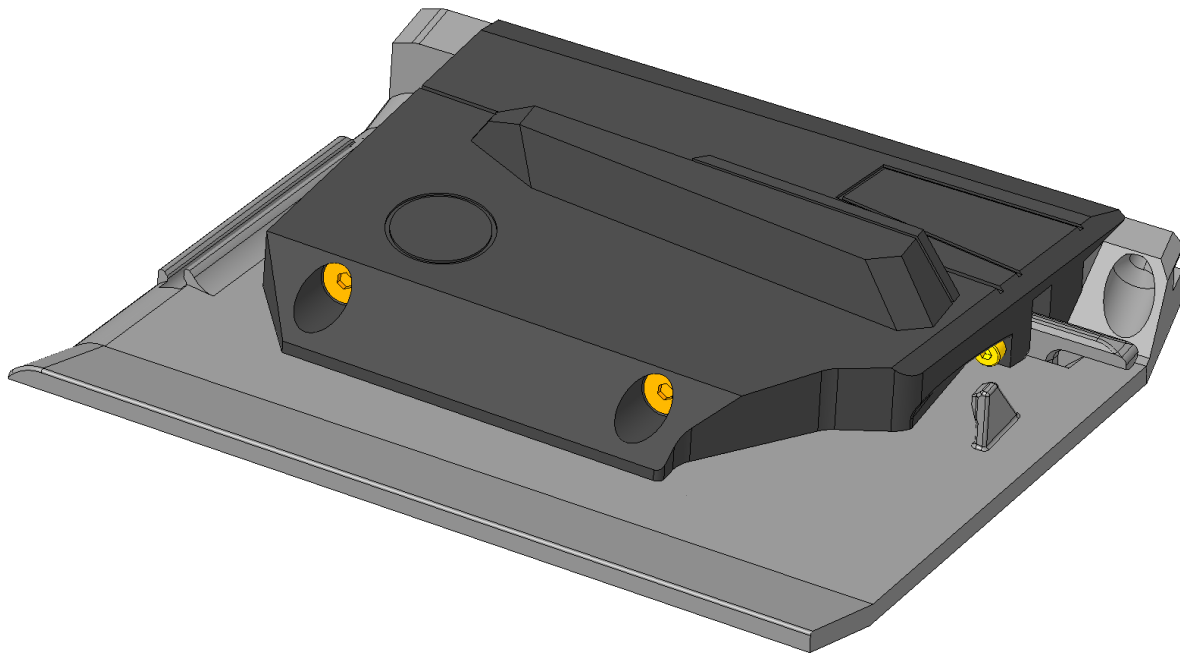
Sub-Steps:

- Put two M3 Square nuts into the “EX_REAR_DOOR_R” (●)
 - Snap in the “EX_REAR_DOOR_PANEL_R” into the “EX_REAR_DOOR_R” (●)
 - Tighten the two M3x10 screw
-

Tighten carefully as you might break the printed parts.







Step 14: Right C Pillar

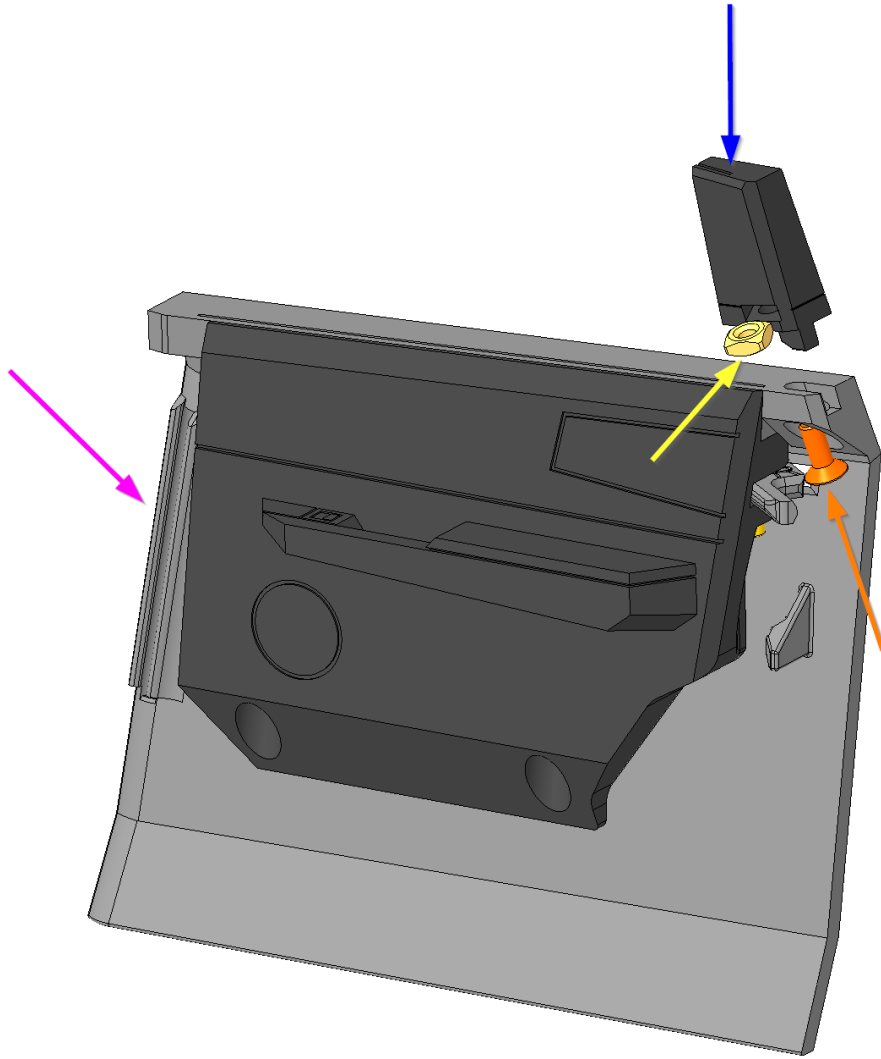
For the following step, please prepare:

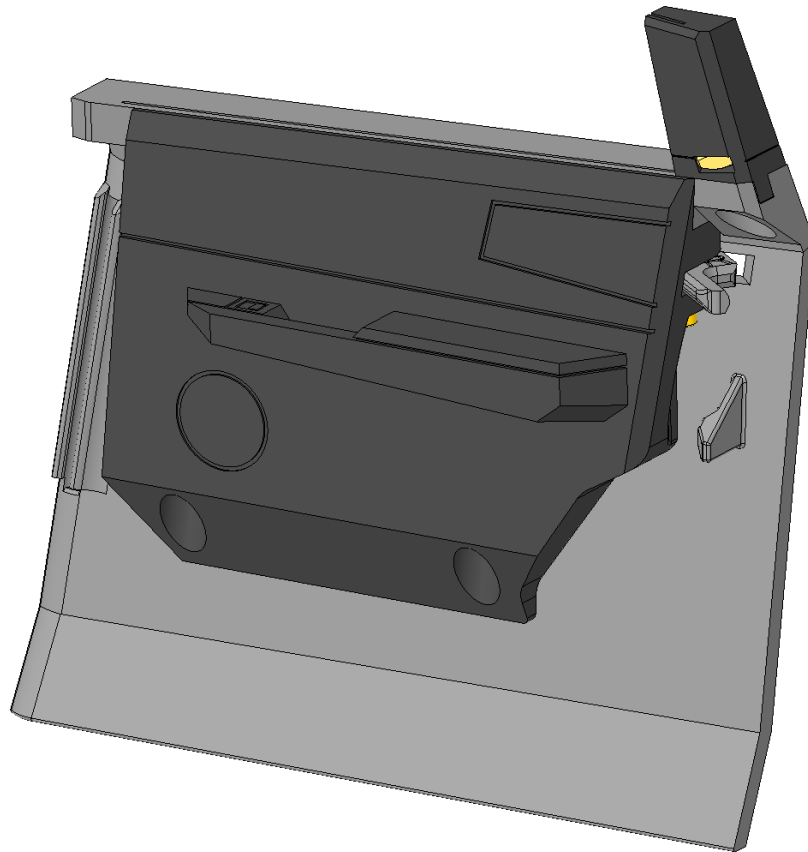
- EX_REAR_DOOR_R (1x)
- EX_C_PILLAR_SUPPORT_R (1x)
- M3 Square nut (1x)
- M3x8 screw (1x)

Sub-Steps:

- Put two M3 Square nuts into the “EX_C_PILLAR_SUPPORT_R” (●) slot
- Put the “EX_C_PILLAR_SUPPORT_R” into the “EX_REAR_DOOR_R” (●)
- Tighten the M3x10 screw

Tighten carefully as you might break the printed parts.





Step 15: Cybertruck panel

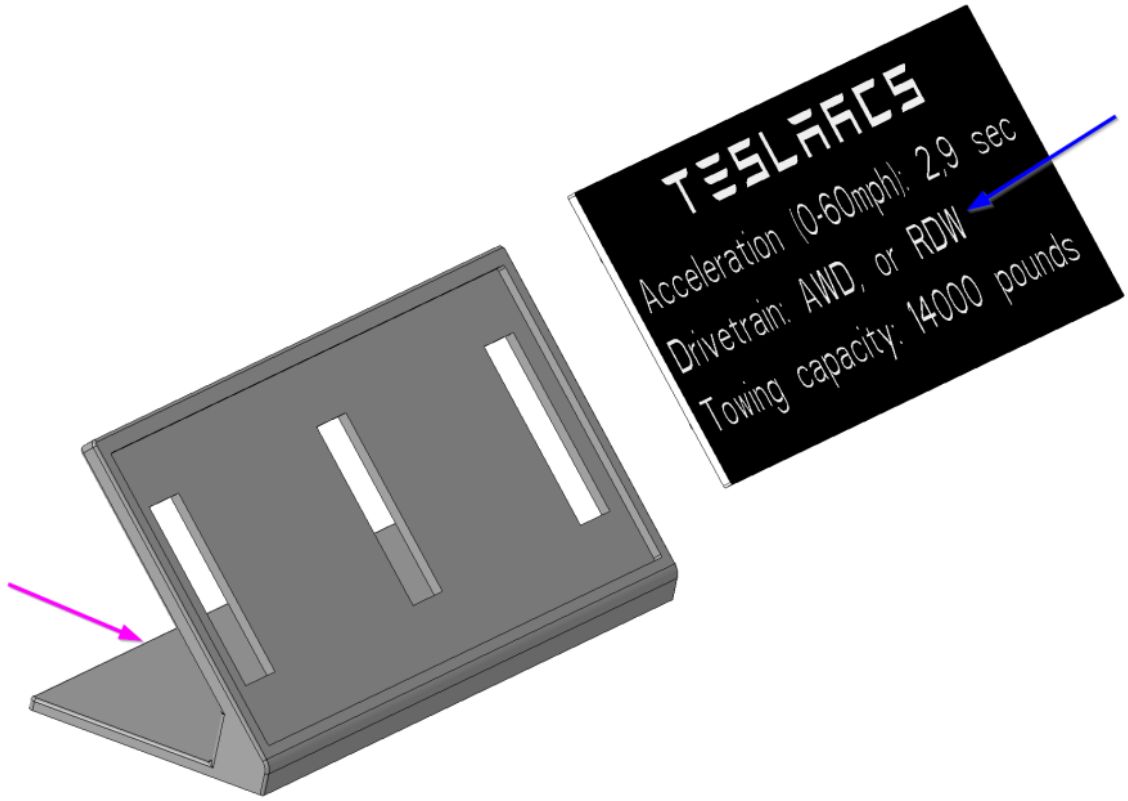
For the following step, please prepare:

- EX_Panel_Holder (1x)
- EX_Panel_Text (1x)

Sub-Steps:

- Snap the “EX_Panel_Text” into the “EX_Panel_Holder” (●)

Snap in carefully as you might break the printed parts.





Leave a Reply

You must be [logged in](#) to post a comment.

By continuing to browse this site, you agree to our [use of cookies](#).