

# 15. Build the Exoskeleton: Front

---

T [teslarcs.com/assembly-manuals/cybertruck/14-19-build-the-exoskeleton/15-build-the-exoskeleton-front/](https://teslarcs.com/assembly-manuals/cybertruck/14-19-build-the-exoskeleton/15-build-the-exoskeleton-front/)



Difficulty

**Moderate**



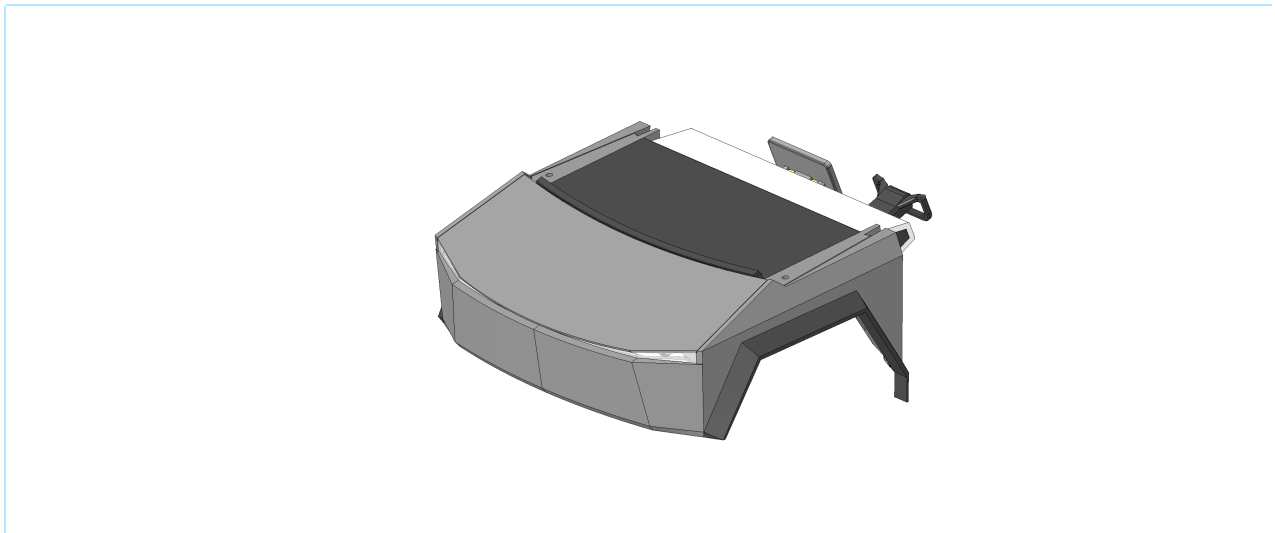
Steps

**12**



Get entire manual as PDF

**Downloading soon**



In this Chapter we will assembly the parts, which were printed in the [“5. 3D Print the Exoskeleton parts: Front”](#)!

## Step 1: Front Light

---

For the following step, please prepare:

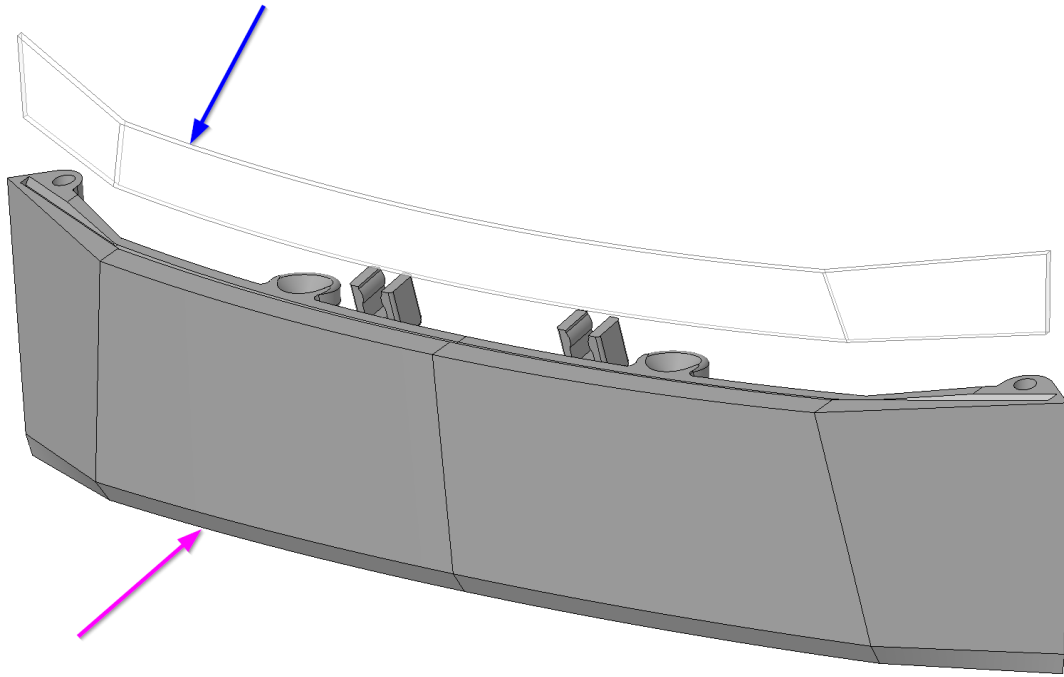
- EX\_FRONT (1x)
- EX\_FRONT\_LIGHT (1x)

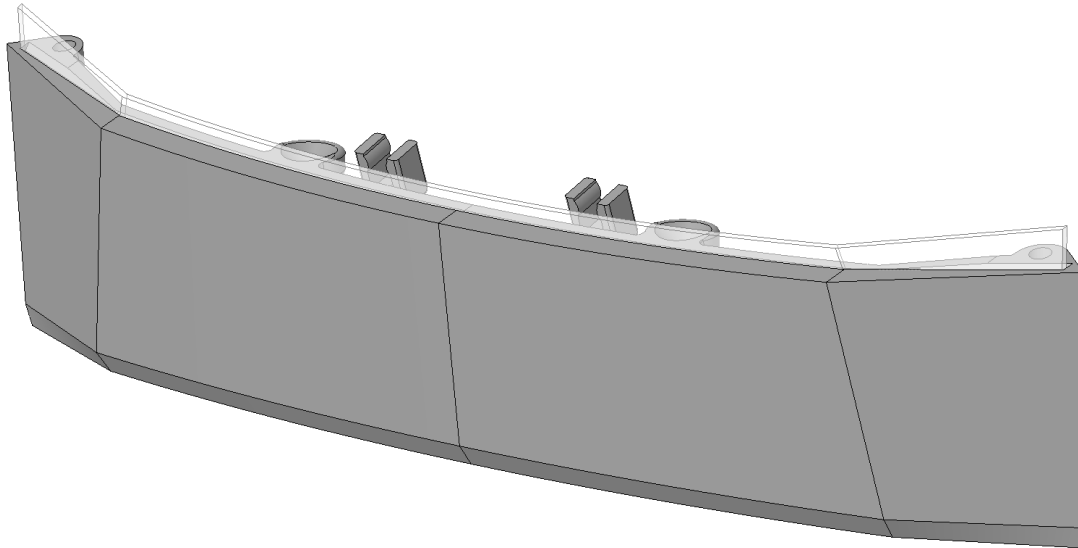
**Sub-Steps:**

● Press the “*EX\_FRONT\_LIGHT*” into the “*EX\_FRONT*” (●). Make sure you press it until the end, final position, but not break the thin Light.

---

Make sure you press the Shaft until the end, final position.





---

## **Step 2: Dashboard**

**For the following step, please prepare:**

- EX\_FRUNK (1x)
- EX\_DASHBOARD (1x)
- M3x8 (2x)

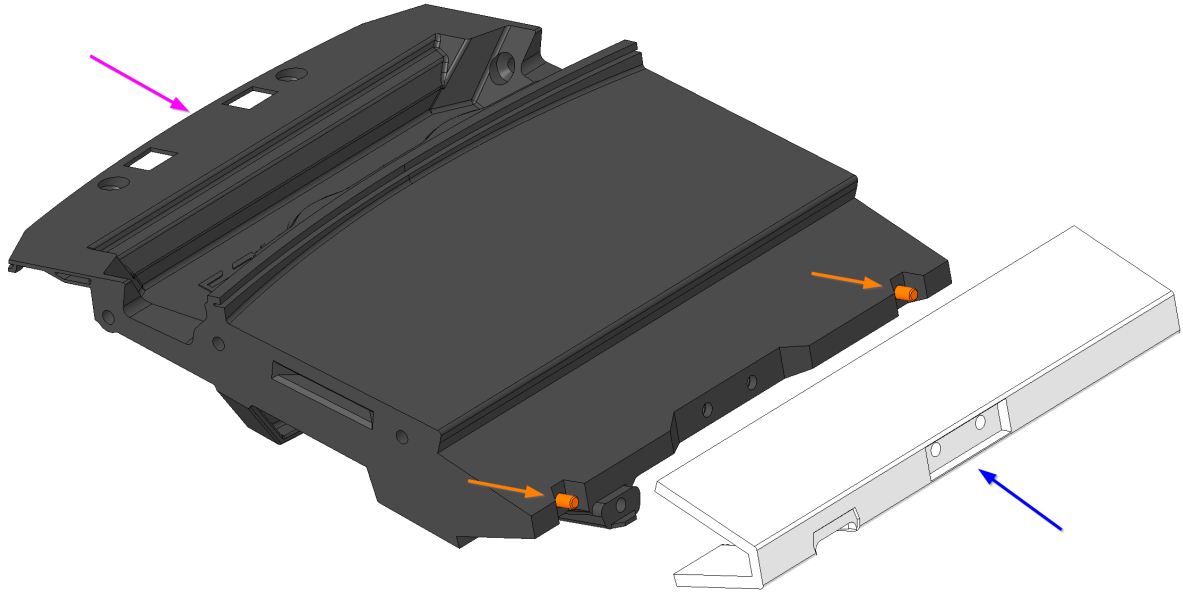
---

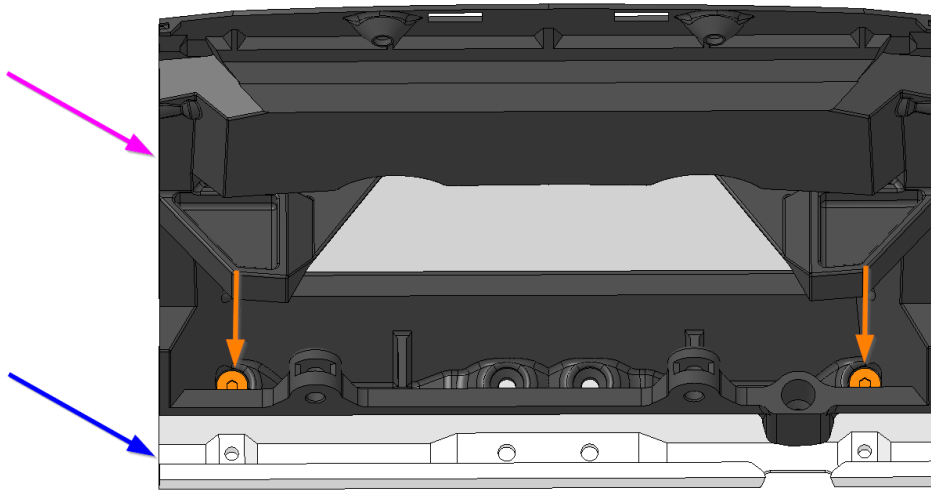
### **Sub-Steps:**

- Put the “EX\_DASHBOARD” to the “EX\_FRUNK” (●)
- Tighten the two M3x8 screw

---

The screws are go in printed plastic, so **don't use excessive strength during tightening**, or the thread in the printed part will damage.







---

### **Step 3: Screen**

**For the following step, please prepare:**

- EX\_FRUNK (1x)
- EX\_SCREEN (1x)
- M3x12 (2x)
- M3 Square nut (2x)

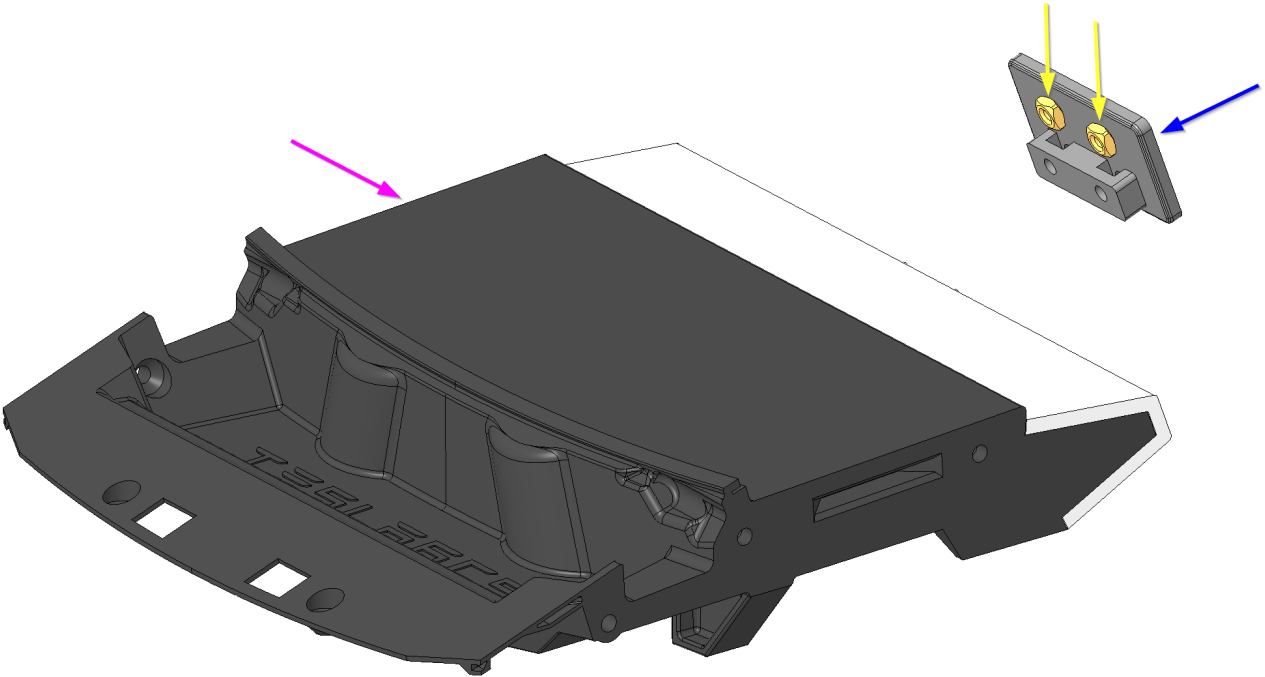
---

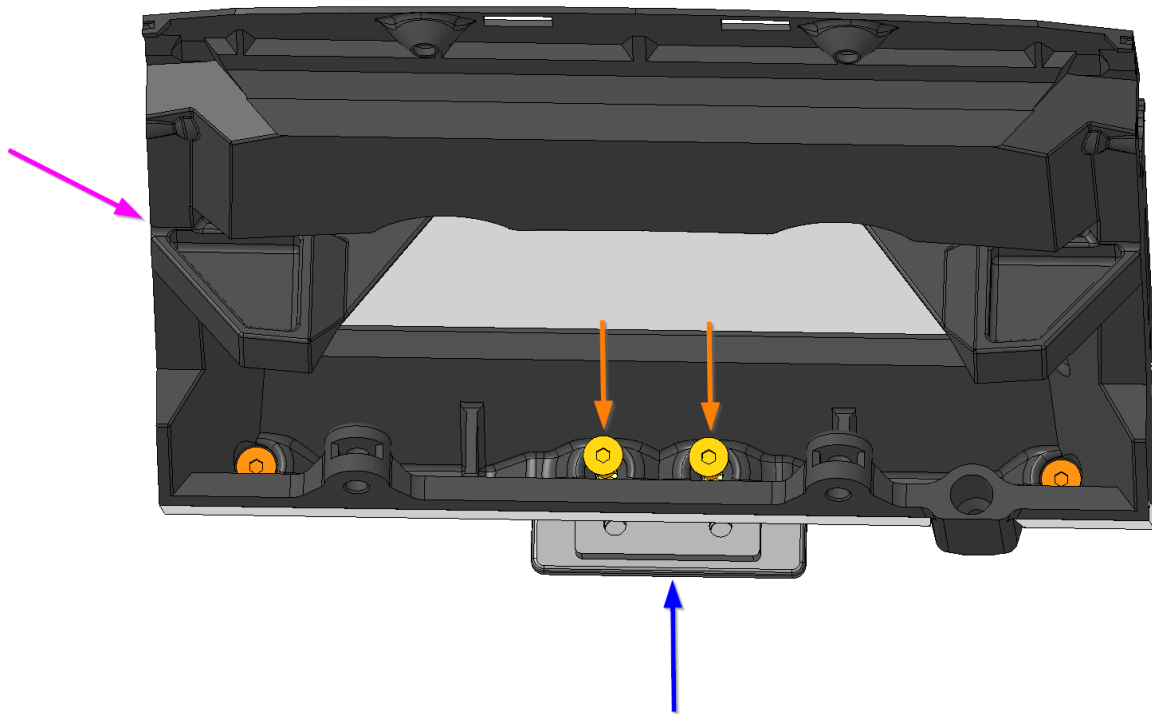
#### **Sub-Steps:**

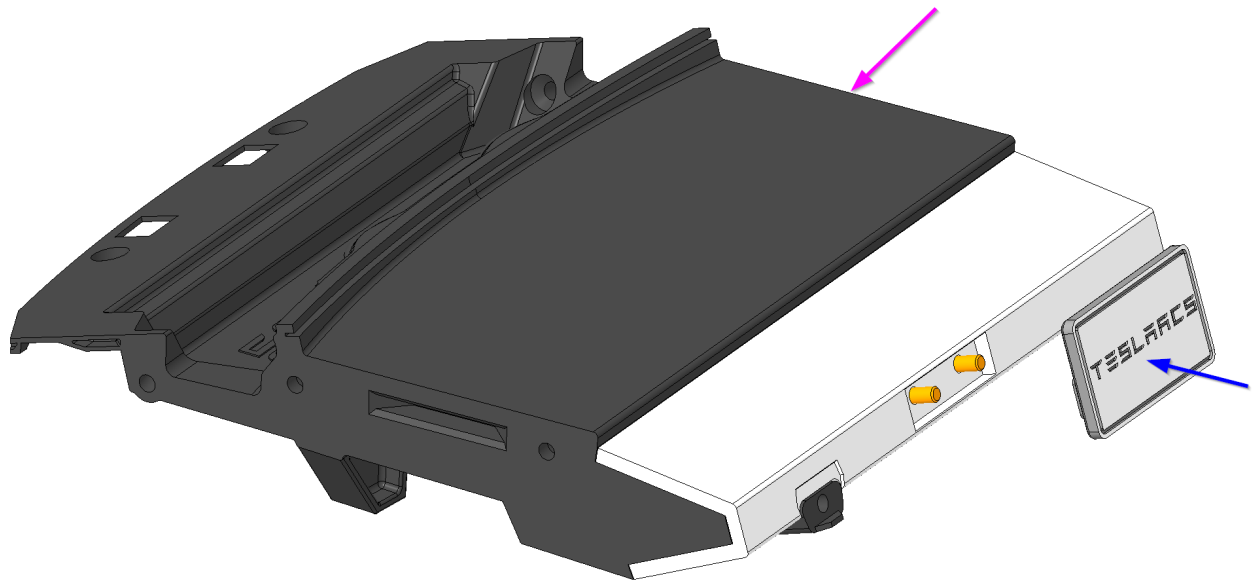
- Put two M3 Square nut into the “EX\_SCREEN” ( ● )
- Tighten with two M3x12 screw the “EX\_SCREEN” ( ● ) to the “EX\_FRUNK” ( ● )

---

Tighten carefully as you might break the printed parts.







---

## **Step 4: Yoke Steering Wheel**

For the following step, please prepare:

- EX\_FRUNK (1x)
- EX\_YOKE\_STEERING\_WHEEL (1x)
- M3x16 (1x)
- M3 Square nut (1x)

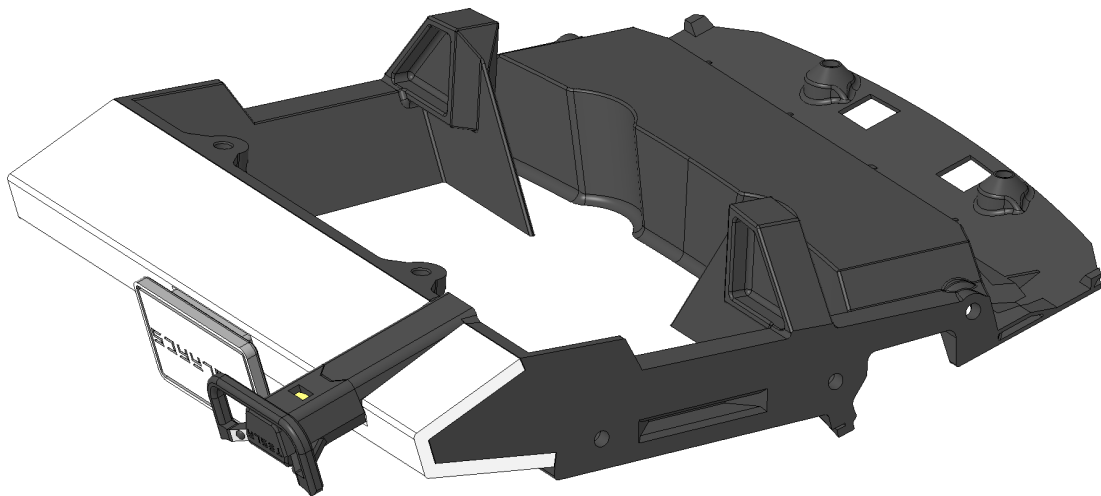
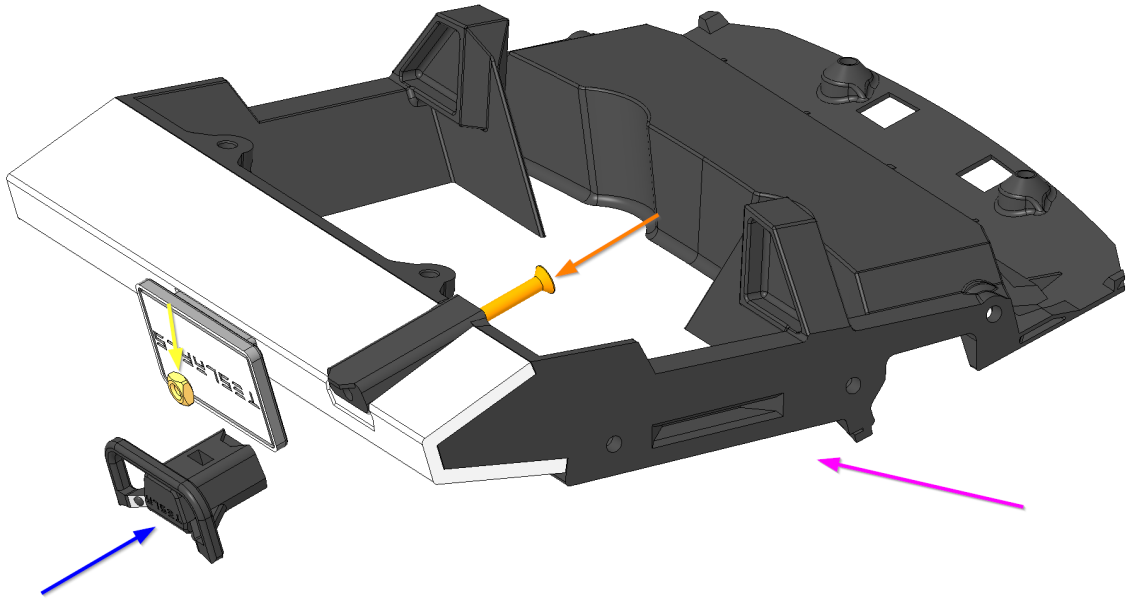
---

### **Sub-Steps:**

- Put three M3 Square nut in the “EX\_YOKE\_STEERING\_WHEEL” ( ● )
- Tighten with M3x16 screw the “EX\_YOKE\_STEERING\_WHEEL” ( ● ) to the “EX\_FRUNK” ( ● )

---

Tighten carefully as you might break the printed parts.



## Step 5: Fender L

---

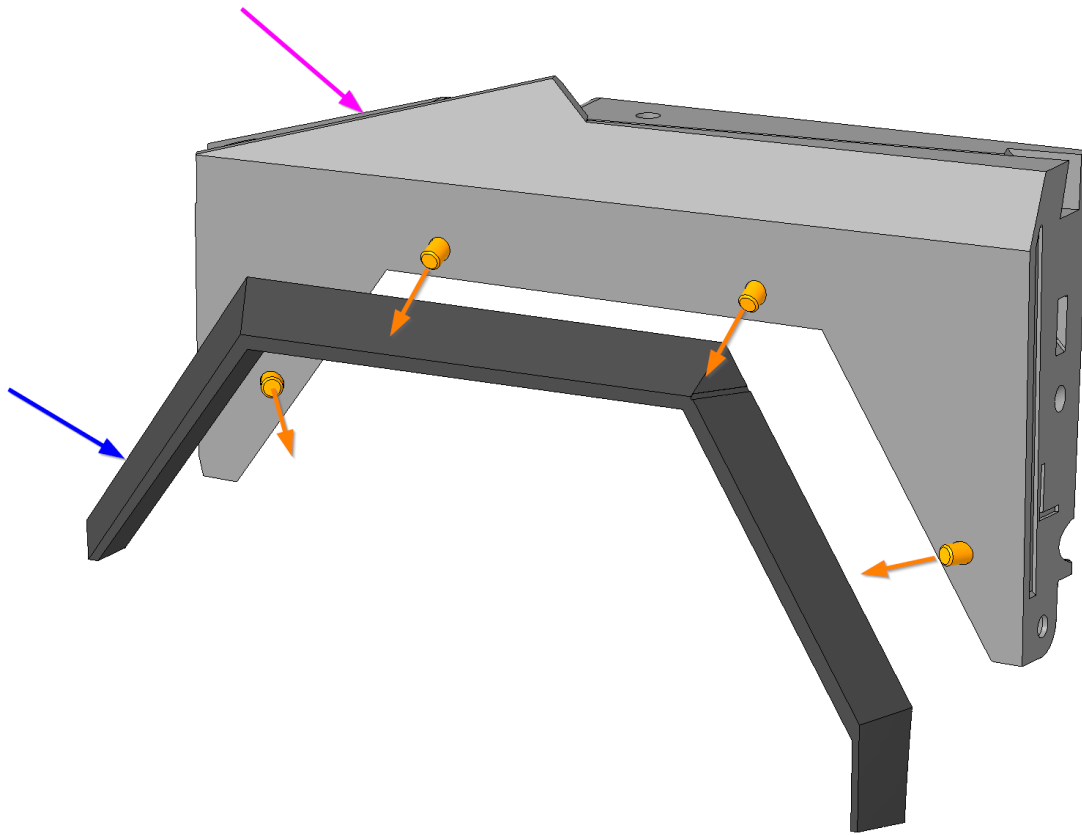
For the following step, please prepare:

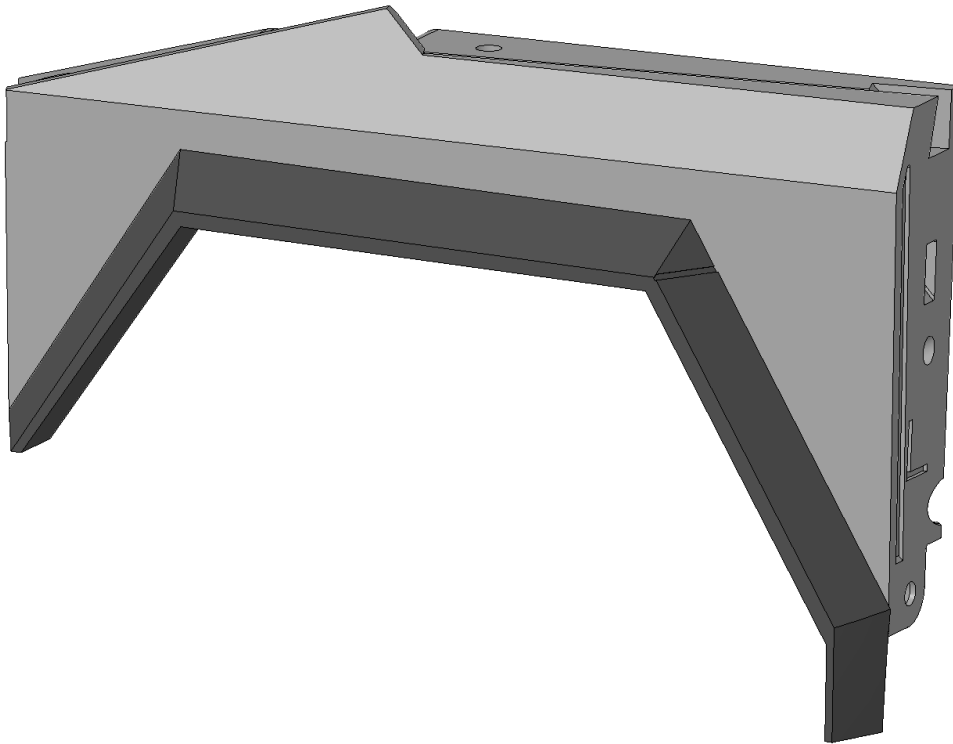
- EX\_SIDE\_FENDER\_L (1x)
  - EX\_FENDER\_FRONT\_L (1x)
  - M3x6 (4x)
- 

### Sub-Steps:

- Tighten with four M3x6 screw the “EX\_FENDER\_FRONT\_L” ( ● ) to the “EX\_SIDE\_FENDER\_L” ( ● )
- 

The screws are go in printed plastic, so **don't use excessive strength during tightening**, or the thread in the printed part will damage.





---

## **Step 6: Fender R**

**For the following step, please prepare:**

- EX\_SIDE\_FENDER\_R (1x)
- EX\_FENDER\_FRONT\_R (1x)
- M3x6 (4x)

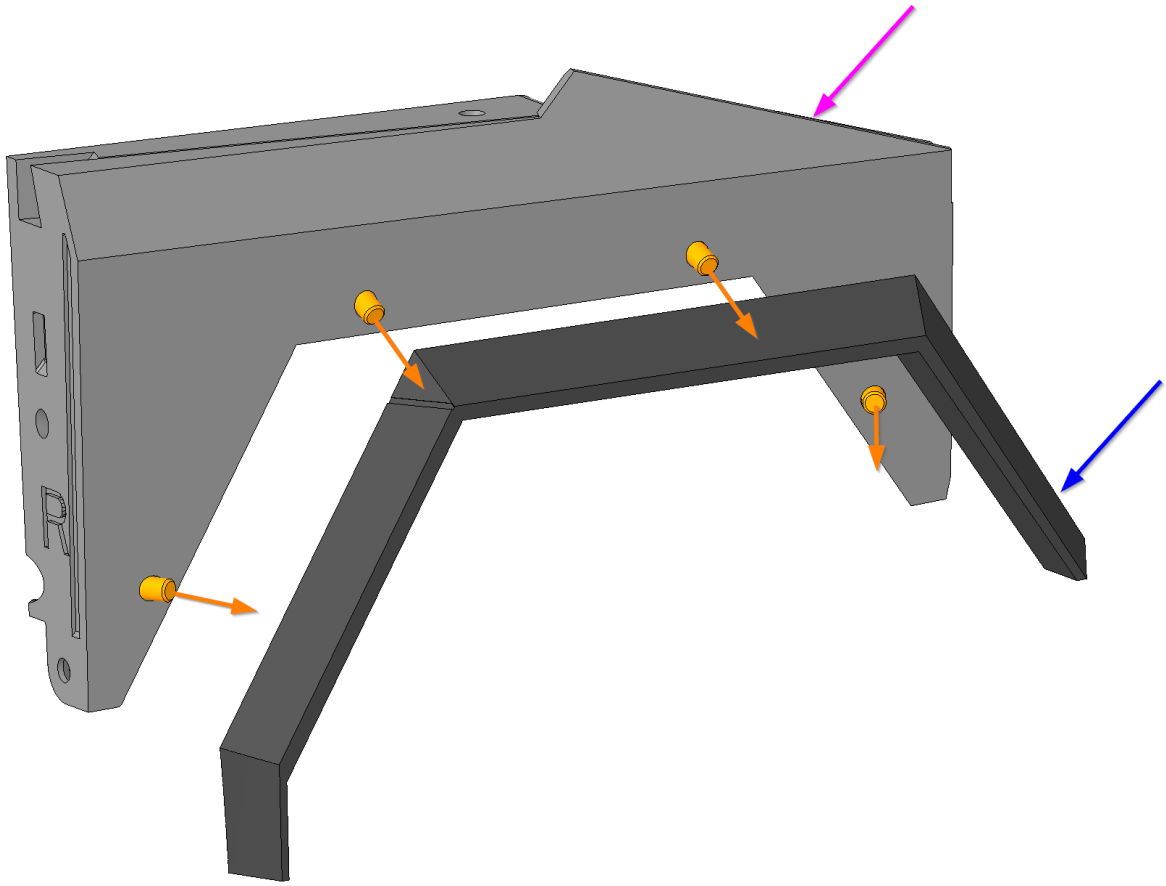
---

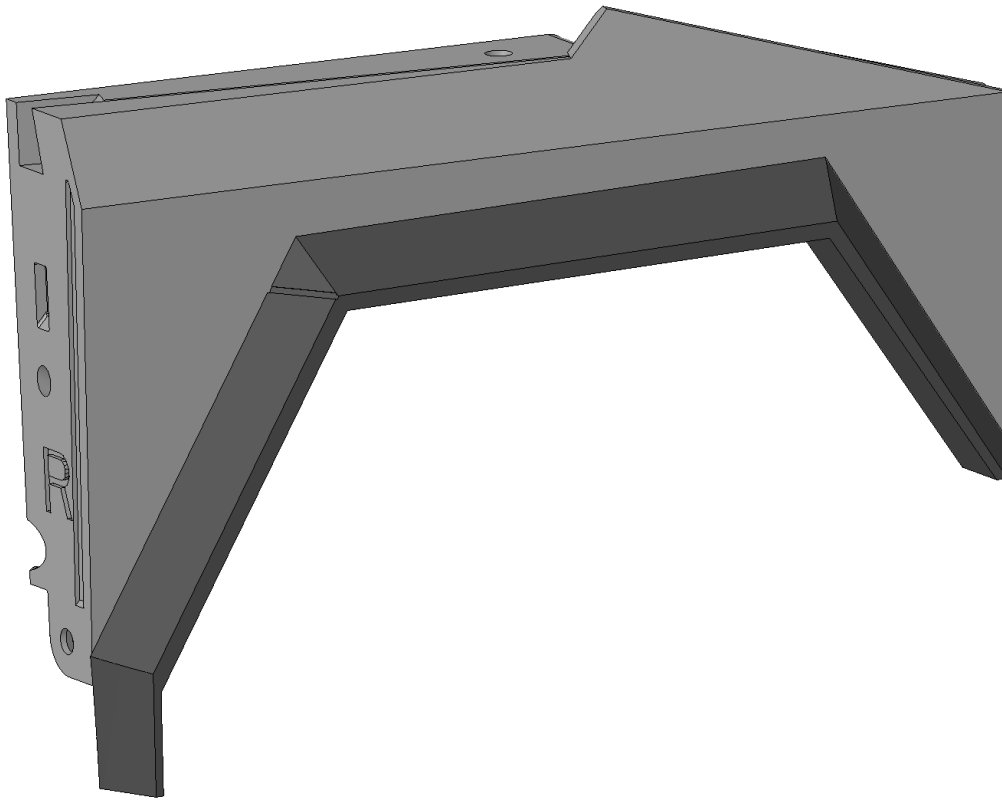
### **Sub-Steps:**

- Tighten with four M3x6 screw the “EX\_FENDER\_FRONT\_R” ( ● ) to the “EX\_SIDE\_FENDER\_R” ( ● )

---

The screws are go in printed plastic, so **don't use excessive strength during tightening**, or the thread in the printed part will damage.





---

## **Step 7: Side Fender L**

**For the following step, please prepare:**

- EX\_FENDER\_FRONT\_L (1x)
- M2 Hexagon nut (2x)
- M3 Square nut (3x)
  
- M2x8 (2x)
- EX\_HOOD\_ARM\_1 (1x)
- EX\_HOOD\_ARM\_2 (1x)

---

### **Sub-Steps:**

- Put two M2 Hexagon nut in the “EX\_FENDER\_FRONT\_L” (●)
- Tighten with M2x8 screw the “EX\_HOOD\_ARM\_1” (●) to the “EX\_FENDER\_FRONT\_L” (●)

- Tighten with M2x8 screw the “EX\_HOOD\_ARM\_2” ( ● ) to the “EX\_FENDER\_FRONT\_L” ( ● )
  - Put three M3 Square nut in the “EX\_FENDER\_FRONT\_L” ( ● )
- 

Tighten carefully as you might break the printed parts



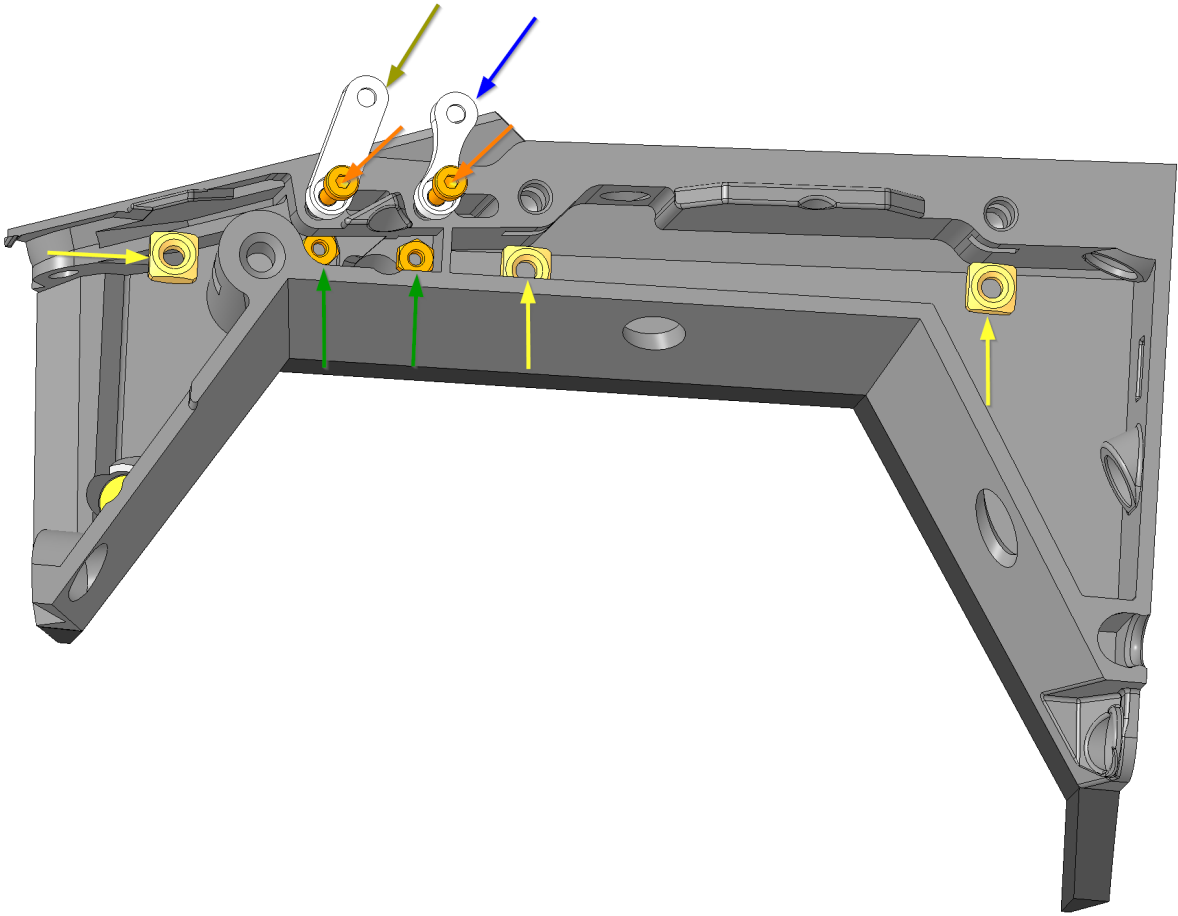
- EX\_FENDER\_FRONT\_L (1x)
- M2 Hexagon nut (2x)
- M3 Square nut (3x)

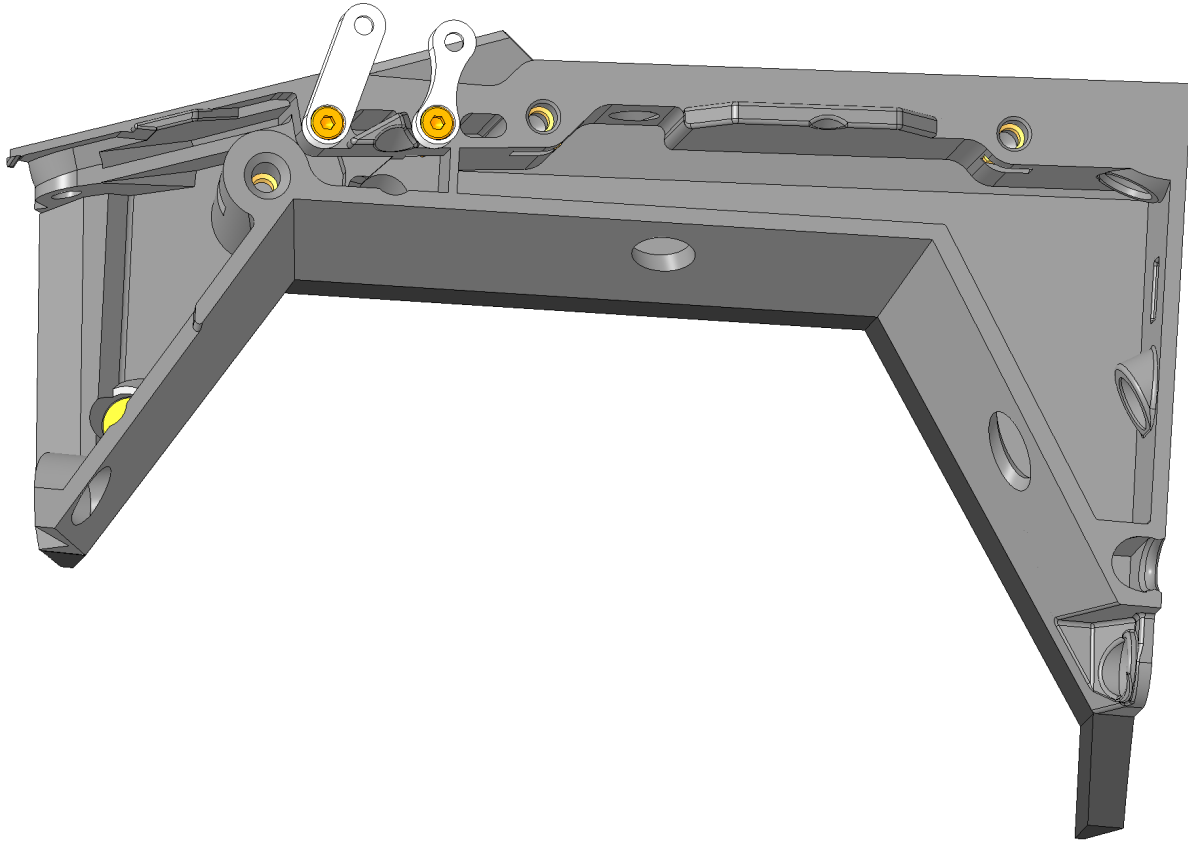
- M2x8 (2x)
  - EX\_HOOD\_ARM\_1 (1x)
  - EX\_HOOD\_ARM\_2 (1x)
- 

### Sub-Steps:

- Put two M2 Hexagon nut in the “EX\_FENDER\_FRONT\_L” (●)
  - Tighten with M2x8 screw the “EX\_HOOD\_ARM\_1” (●) to the “EX\_FENDER\_FRONT\_L” (●)
  - Tighten with M2x8 screw the “EX\_HOOD\_ARM\_2” (●) to the “EX\_FENDER\_FRONT\_L” (●)
  - Put three M3 Square nut in the “EX\_FENDER\_FRONT\_L” (●)
- 

Tighten carefully as you might break the printed parts





---

## **Step 9: Side Fenders, Dashboard**

For the following step, please prepare:

- EX\_SIDE\_FENDER\_L (1x)
- EX\_DASHBOARD (1x)
- EX\_SIDE\_FENDER\_R (1x)
  
- M3x10 (4x)
- M3x12 (2x)

---

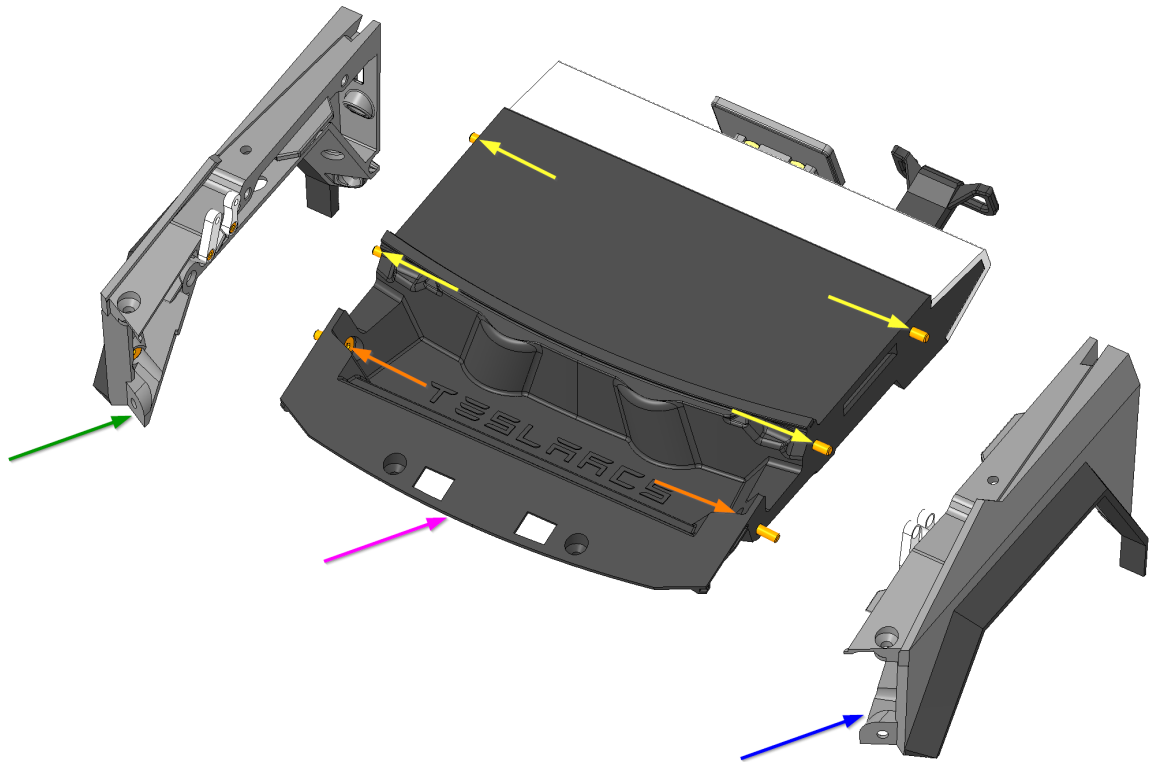
### **Sub-Steps:**

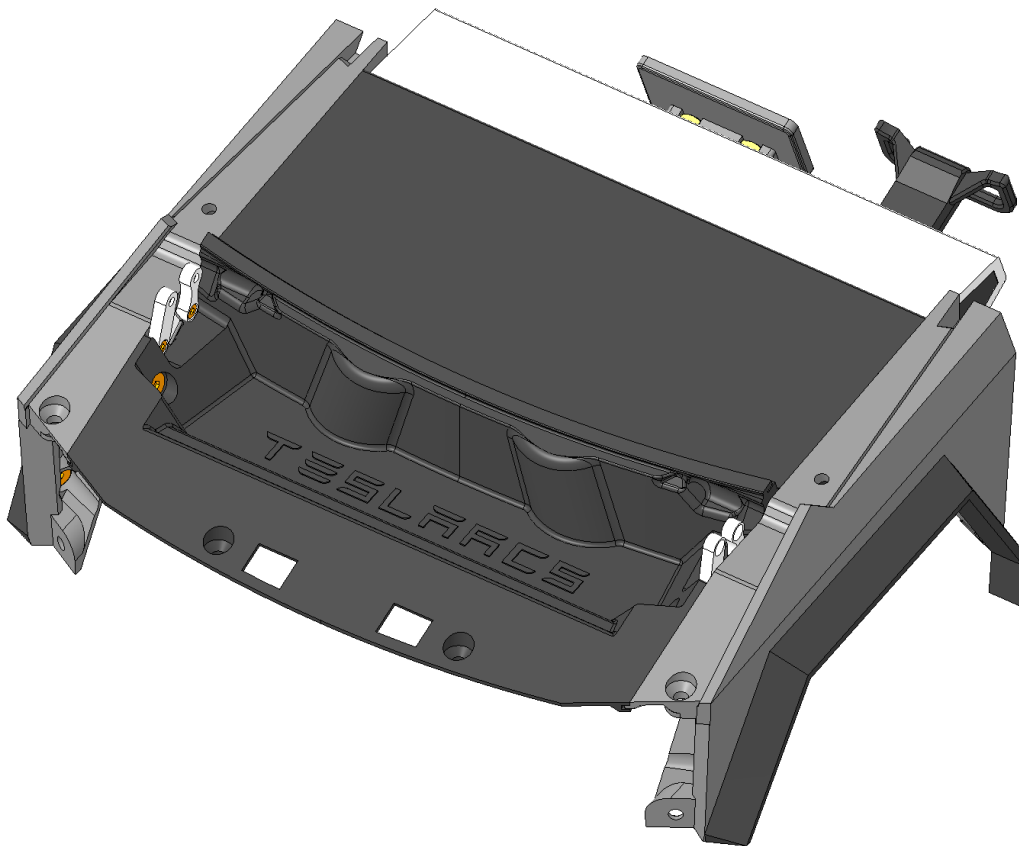
- Tighten with two M3x10 Screw the “EX\_SIDE\_FENDER\_L” ( ● ) to the “EX\_DASHBOARD” ( ● )
- Tighten with one M3x12 Screw the “EX\_SIDE\_FENDER\_L” ( ● ) to the “EX\_DASHBOARD” ( ● )
- Tighten with two M3x10 Screw the “EX\_SIDE\_FENDER\_R” ( ● ) to the “EX\_DASHBOARD” ( ● )

● Tighten with one M3x12 Screw the “EX\_SIDE\_FENDER\_R” (●) to the “EX\_DASHBOARD” (●)

---

Tighten carefully as you might break the printed parts





---

## **Step 10: Front**

**For the following step, please prepare:**

- EX\_SIDE\_FENDER\_L (1x)
- EX\_FRONT (1x)
- EX\_SIDE\_FENDER\_R (1x)
  
- M3 Square nut (4x)
- M3x6 (2x)
- M3x10 (4x)

---

### **Sub-Steps:**

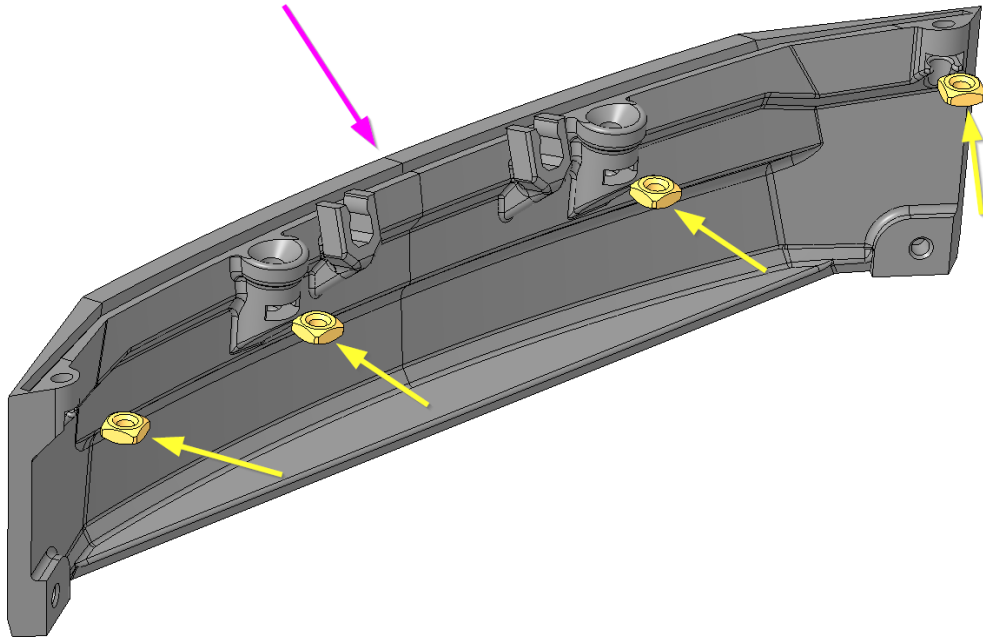
- Put four M3 Square nut in the “EX\_FRONT” (●)
- Tighten with one-one M3x6 Screw the “EX\_SIDE\_FENDER\_L” (●) and

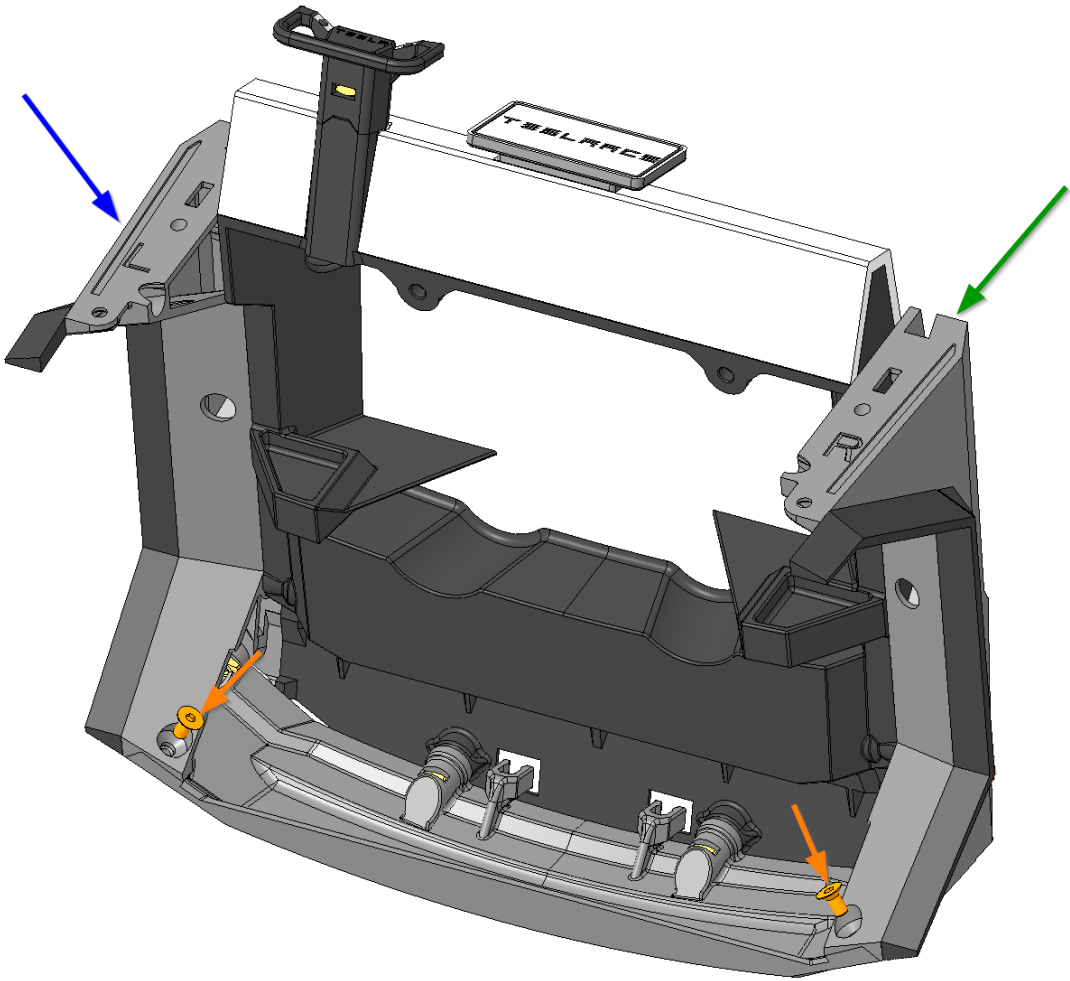
*“EX\_SIDE\_FENDER\_R”*

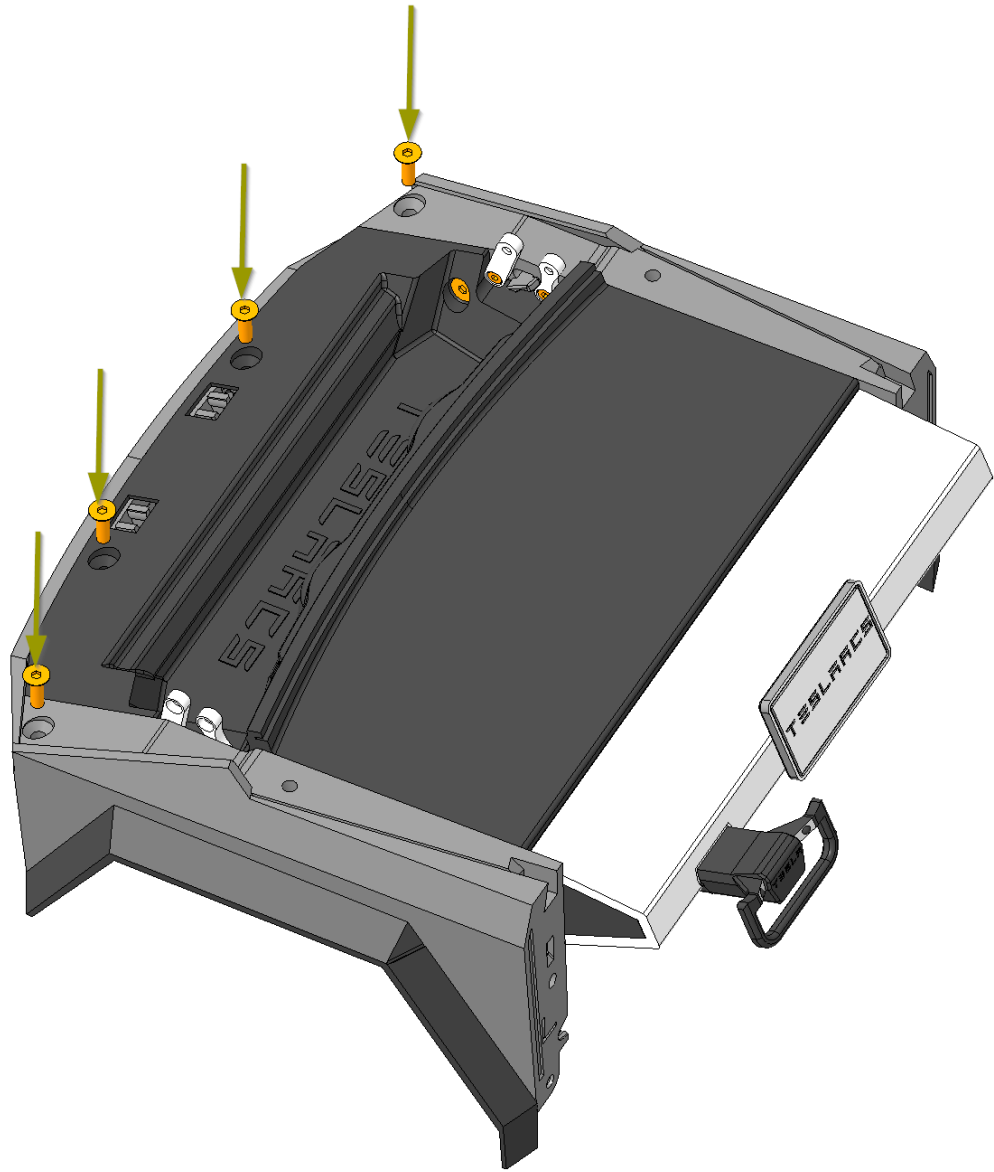
● Tighten four M3x10 Screw

---

Tighten carefully as you might break the printed parts









---

## **Step 11: Hood 2/1**

**For the following step, please prepare:**

- M2 Hexagon Nut (4x)

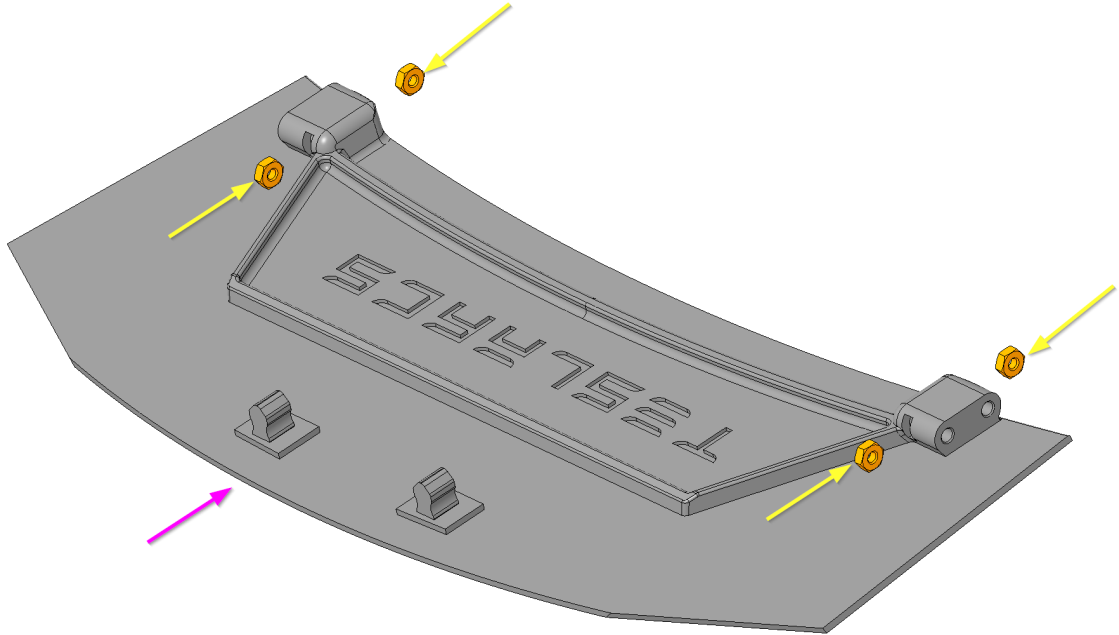
---

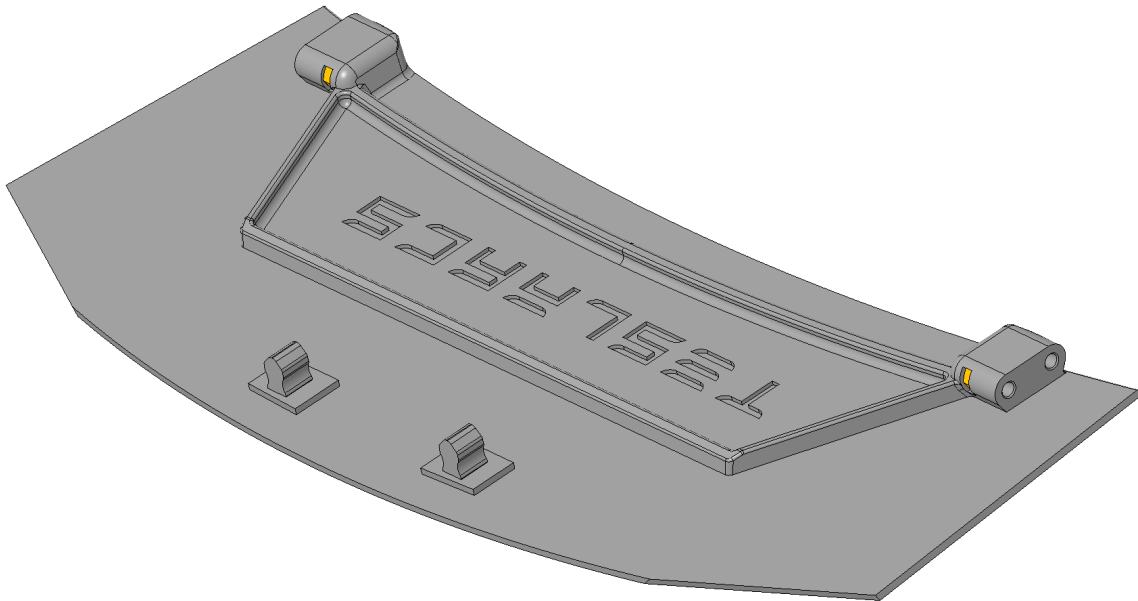
### **Sub-Steps:**

- Put four M2 Hexagon Nut into the Hood (●)

---

Tighten carefully as you might break the printed parts





---

## **Step 12: Hood 2/2**

**For the following step, please prepare:**

- M2x8 Screw (4x)

---

### **Sub-Steps:**

- Tighten with four M2x8 Screw the Hood(●). You should not tighten the screws completely! Make sure the Hood can move with small resistance!

---

Tighten carefully as you might break the printed parts

